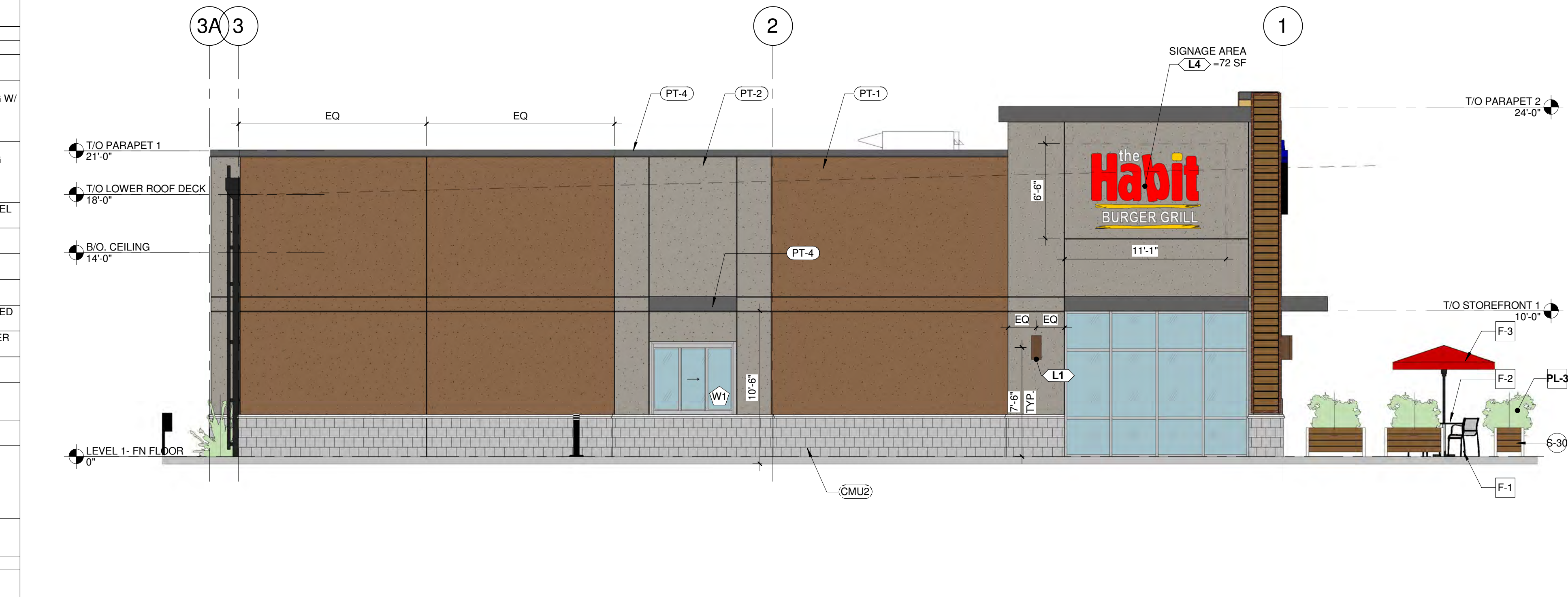
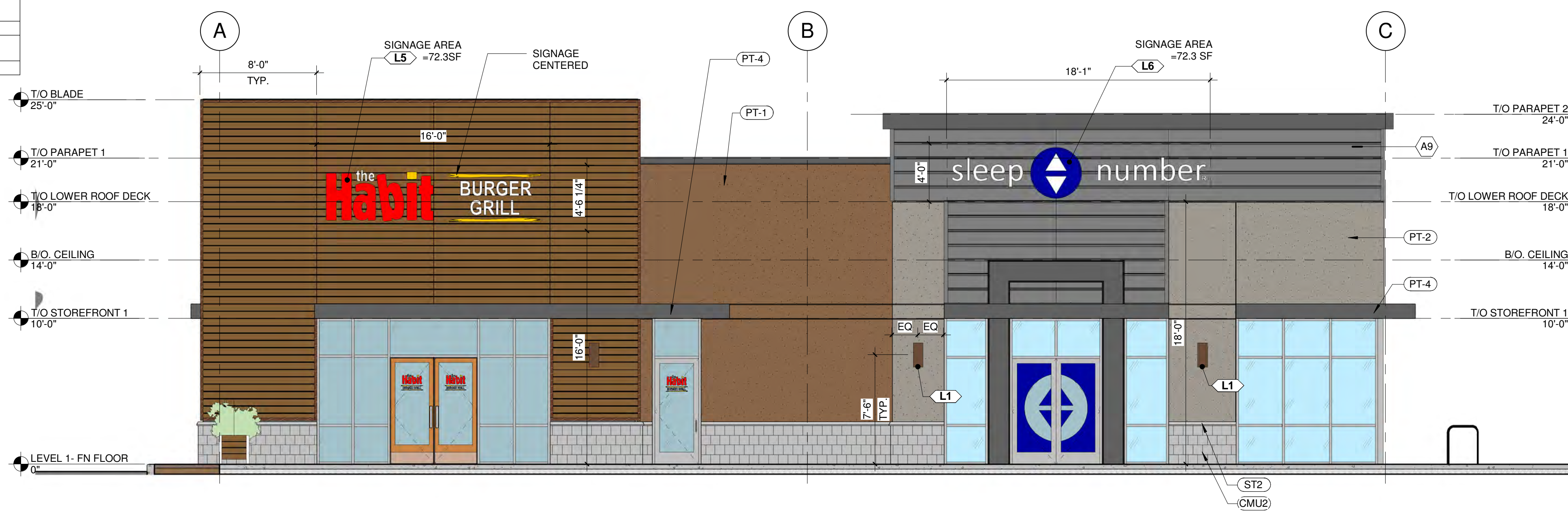


| MATERIALS | | | |
|-----------|--|------------------------|---|
| CODE | DESCRIPTION | MANUFACTURER | MODEL |
| AIR | 1" AIR GAP | | |
| ALU | CLEAR ANODIZED ALUMINUM, MULLION TYP | | |
| BK | THIN BRICK FINISH | PINE HALL BRICK | BROWNS FERRY |
| CF-1 | CONCRETE FOUNDATION, SEE STRUCTURAL | | SEE STRUCTURAL |
| CMU2 | SPLIT RUNNING CMU, 4" THICK NOMINAL, COLOR GREY | YORK BUILDING PRODUCTS | SPLIT FACE CMU COLOR 518 FLINT |
| CMU8 | CMU, 8" NOMINAL | | |
| FL-1 | CONCRETE PAD, BROOM FINISH - SEE STRUCTURAL | | |
| FL-2 | CONCRETE SIDEWALK, AS PER INDUSTRY STANDARDS AND GOVERNMENTAL REQUIREMENTS, SEE CIVIL DRAWINGS | | |
| GR-2 | THIN MORTAR | | |
| GRD | MTL SCREEN | | |
| GYP2 | 5/8" GYP. BD. - SEE WALL DET & NOTE 1 | | |
| IG-1 | 1" IN CLEAR, TEMPERED INSULATED LOW-E W/ BLUE REFLECTION, WITH WRITTEN VERIFICATION FROM GLASS COMPANY, DUAL SEALED UNITS, SEE SCHED. | KAWNEER | LOW-E INSULATED TEMPERED GLAZING W/ BLUE REFLECTION |
| IG-2 | 1" IN CLEAR, TEMPERED INSULATED LOW-E, WITH WRITTEN VERIFICATION FROM GLASS COMPANY, DUAL SEALED UNITS, SEE SCHED. | KAWNEER | LOW-E INSULATED TEMPERED GLAZING |
| IG-3 | 1" INSULATED SPANDREL GLAZING, UP TO 10 A.F.F. SEE SCHED. | KAWNEER | INSULATED SPANDREL GLAZING |
| MS-1 | GALVANIZED WIRE MESH- LADDER GATE | | |
| P-M1 | BLACK PAINTING, MATTE FINISH, OVER GALVANIZED MTL SURFACE | SHERWIN WILLIAMS | BLACK |
| P-M3 | SIGNAGE MTL PAINT - BLACK, SATIN FINISH | | |
| PT-1 | EIFS, COMPLETE FINISH, COLOR SW9098 BAKED COOKIE | DRYVIT | COLOR SW9098 BAKED COOKIE |
| PT-2 | EIFS, COMPLETE FINISH, COLOR SW9170 ACIER | DRYVIT | COLOR SW9170 ACIER |
| PT-3 | GREY PAINTING, MATTE FINISH, OVER GALVANIZED MTL SURFACE | SHERWIN WILLIAMS | GREY |
| PT-4 | DARK GREY PAINTING, MATTE FINISH, OVER GALVANIZED MTL SURFACE | SHERWIN WILLIAMS | DARK GREY |
| PT-5 | GREY PAINTING, SATIN FINISH, OVER GALVANIZED MTL SURFACE | FIRESTONE | Duracast Dove Gray |
| PT-6 | 1/2" 18GA MTL PANEL W/ EXPOSED FASTENERS, INSTALL CORRUGATIONS ON HORIZONTAL, PROVIDE ANGLES BEHIND PANELS TO 2X4IN TUBE STEEL GATE STRUCTURE. BLACK PAINT FINISH. | SHERWIN WILLIAMS | BLACK |
| PT-7 | PAINTING COAT ON EXTERIOR MTL SURFACE, COLOR BLACK, AS DTE STANDARDS. | SHERWIN WILLIAMS | |
| RF-2 | R-30 MIN. CONT RIGID INSULATION | | |
| RF-3 | WHITE 60 MILL FIRESTONE ULTRAPLY TPO MEMBRANE, MECHANICALLY FASTENED OVER 5" (2X2.6") RIGID INSULATION, MIN R-VALUE OF 20 | FIRESTONE | ULTRAPLY TPO MEMBRANE |
| SH-1 | 5/8" EXTERIOR GRADE PLYWOOD SHEATHING | | |
| SH-2 | 1/2" EXTERIOR GRADE PLYWOOD SHEATHING | | |
| SH-R | USG SHEETROCK 5/8" PANEL (UL AR) | USG | USG Sheetrock Brand 5/8" panel (UL AR) |
| ST2 | PRE CAST SILL, COLOR LIMESTONE | STONECAST | LIMESTONE |
| STD-3 | 3 1/2" DEEP 20 ga. STEEL STUDS W/ 3" MINERAL WOOL BATT INSULATION | | |
| STD-6 | 6in DEEP, 25ga. SPACED MAX 24IN O.C., W/ FIBERGLASS INSULATION | | |
| VN-1 | BLACK VINYL | | |
| VN-2 | RED VINYL | | |
| VN-3 | WHITE VINYL | | |
| VN-4 | YELLOW VINYL | | 3630-125 GOLDEN YELLOW |
| WD-1 | WOOD SLATS | | |
| WD-2 | PRESSURE TREATED PINE OR EQUIVALENT | | |
| WD-3 | WOOD SLATS | | |



1 NORTH ELEVATION
SCALE: 3/16" = 1'-0"



2 WEST ELEVATION
SCALE: 3/16" = 1'-0"

EXTERIOR ELEVATION NOTES

- GENERAL CONTRACTOR TO COORDINATE & SCHEDULE SIGNAGE INSTALLATION WITH THE SIGNAGE CONTRACTOR PROVIDING A MINIMUM SCHEDULING NOTICE OF 4 WEEKS AND 1 WEEK PRIOR TO SCHEDULED DATE OF INSTALLATION. CONSTRUCTION MANAGER TO PROVIDE GENERAL CONTRACTOR WITH SIGNAGE CONTRACTOR CONTACT INFORMATION.
- GENERAL CONTRACTOR SHALL COORDINATE WITH ELECTRICAL CONTRACTOR TO FURNISH AND INSTALL ELECTRICAL CIRCUITS INCLUDING ALL CONDUIT, WIRE, CONNECTIONS AND BREAKERS AT PANEL BOARD NECESSARY TO SERVE SIGNAGE.
- GENERAL CONTRACTOR TO PROVIDE FIRE TREATED WOOD STUD BLOCKING OR EQUIVALENT TO SUPPORT SIGNAGE.
- SIGNAGE CONTRACTOR SHALL VERIFY SIZE AND LOCATION OF ANY AND ALL ALLOWABLE MONUMENT OR POLE SIGNAGE WITH LANDLORD AND PROVIDE SHOP DRAWINGS PRIOR TO FABRICATION TO FRANCHISING'S DESIGNER FOR APPROVAL.
- SIGNAGE CONTRACTOR TO INSTALL SIGNAGE IN COMPLIANCE WITH LOCAL CODES AND OBTAIN PERMIT AND LANDLORD APPROVAL.
- SIGNAGE CONTRACTOR TO SUPPLY SHOP DRAWINGS TO FRANCHISING'S CONSTRUCTION MANAGER AND TO GENERAL CONTRACTOR AS NEEDED. GENERAL CONTRACTOR TO NOTIFY FRANCHISING'S CONSTRUCTION MANAGER IMMEDIATELY IF SHOP DRAWINGS OR INSTALLATION IS IN DISCREPANCY WITH FRANCHISING'S ARCHITECTURAL DRAWINGS.

GENERAL KEYNOTES

- B-1 NON-ILLUMINATED BOLLARD
- C10 6" DIAMETER STEEL CONCRETE FILLED PIPE BOLLARD, SEE STRUCTURAL
- C15 DERO HOOP BIKE "U" RACK, 14.5"x34"x1 5/8", 12 GA STEEL
- F-1 PASO DOUBLE CHAIR, ARMS PKG OF 2
- F-2 SQUARED TABLE, 2'X2', BLACK FINISH
- F-3 OUTDOOR UMBRELLA
- FT CONCRETE FOOTING - SEE STRUCTURAL
- IG-1 1" INSULATED LOW-E CLEAR GLAZING PANELS, DUAL SEALED UNITS.
- IG-3 1" INSULATED SPANDREL GLAZING
- L1 OUTDOOR WALL SCONCE, FLUSH MOUNT, SEE ELECTRICAL
- L2 OUTDOOR WALL SCONCE OVER SERVICE DOOR, SEE ELECTRICAL
- L4 HABIT ILLUMINATED SIGN - STACKED LOGO
- L5 HABIT MESA STANDARD ILLUMINATED LOGO
- L6 SLEEP NUMBER STANDARD LOGO
- L-A SITE POLE LIGHTING TYPE A - SEE ELECTRICAL SHEETS FOR SPECS
- L-EX EXISTING SITE POLE, NEW LOCATION - SEE ELECTRICAL
- M1 RTU#1, TYPICAL RTU LOCATION SHOWN - REFER TO TENANT CONSTRUCTION DOCUMENTS FOR EXACT LOCATION OF ALL ROOF EQUIPMENT AND PENETRATION.
- M-7 AIR CURTAIN AT DRIVE-THRU WINDOW, SEE RCP NOTE #4 AND M2-01 FOR SPECS
- P-1 SINGLE PARKING, DIM 9'X18', REFLECTIVE WHITE PAINT
- P-2 SINGLE PARKING, DIM 9'X16', REFLECTIVE WHITE PAINT
- P-3 ADA PARKING, DIM 8'X18', REFLECTIVE WHITE PAINT
- PL-1 CREEPIN JUNNIPER
- PL-2 HYDRANGEA
- PL-3 STAR JASMINE
- S-1 STOP SIGN AND PAINTED BAR, WHITE LEGEND, RED BACKGROUND
- S-2 TURN ARROW, REFLECTIVE WHITE PAINT
- S-4 RESERVED PARKING SIGN, GREEN LEGEND, WHITE BACKGROUND
- S-5 FLOOR PAINT STOP SIGN, REFLECTIVE WHITE PAINT
- S-7 FLOOR PAINT STOP ARROW, REFLECTIVE WHITE PAINT
- S-9 FLOOR PAINT ADA PARKING AREA STRIPING.
- S-19 ADA SIGN, W/ WHITE BACKGROUND, REFLECTIVE WHITE PAINT
- S-21 CAUTION STRIPED PAINTING
- S-22 MONUMENT SIGN - INTERNALLY ILLUMINATED.
- S-30 PLANTER
- S-31 TRASH DUMPSTER
- S-32 NEW CURB
- S-35 PARKING CONCRETE PROTECTION CURB
- SE1 ROOF ACCESS SERVICE LADDER WITH GATE
- SE-1 PRE-MENU BOARD
- SE-2 MENU ORDER BOARD PLACEMENT PANEL AND SPEAKER
- SE-3 8'-6" CLEARANCE BAR
- SE-4 THRU WALL SCUPPER WITH COLLECTOR HEAD AND DOWNSPOUT
- SE-5 1'X1' ROOF WALKWAY PADS
- ST2 STONE SWEEP, SEE WALL DETAILS
- ST-1 BEARING STRUCTURE, SEE STRUCTURAL
- W1 COMMERCIAL, DOUBLE SLIDE THERMAL ALUMINUM WINDOW

Municipal Approval Stamps



ILLINOIS DESIGN FIRM # 184.006688
THESE DRAWINGS AND SPECIFICATIONS ARE THE CONFIDENTIAL AND PROPRIETARY PROPERTY OF DXU LLC AND SHALL NOT BE COPIED OR REPRODUCED WITHOUT WRITTEN AUTHORIZATION.



THOMAS ENGLISH
725 E. 65TH STREET, STE 300
INDIANAPOLIS, IN 46220

Client

PROPOSED RETAIL DEVELOPMENT
1961 S. VAL VISTA DR
MESA, AZ 85204

Project

Consultant

| NO. | DATE | REVISIONS/ISSUANCES |
|-----|------------|-----------------------|
| | 02/05/2018 | ZONING/ DESIGN REVIEW |
| | 11/20/2017 | INITIAL ISSUE |

PROFESSIONAL CERTIFICATION:
I CERTIFY THAT THESE DOCUMENTS WERE PREPARED OR APPROVED BY ME, AND THAT I AM A DULY LICENSED ARCHITECT UNDER THE LAWS OF THE STATE OF ARIZONA, LICENSE NUMBER 59402.



SEAL

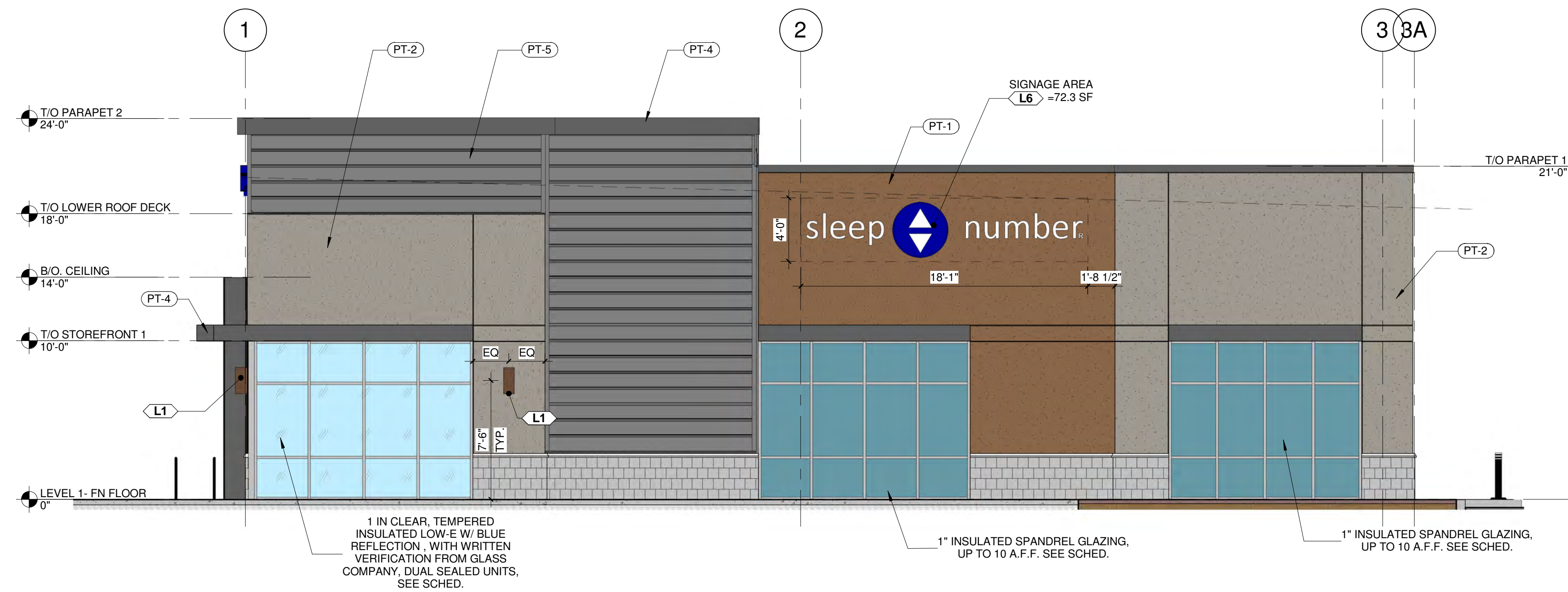
FOR PERMIT/ FOR BID

| | |
|-----------------|---------------|
| DATE: | 02/05/2018 |
| PROJECT NUMBER: | DXU#17-264 |
| SCALE: | 3/16" = 1'-0" |
| DRAWN BY: | DTE |
| CHECKED BY: | BG |
| APPROVED BY: | ES |

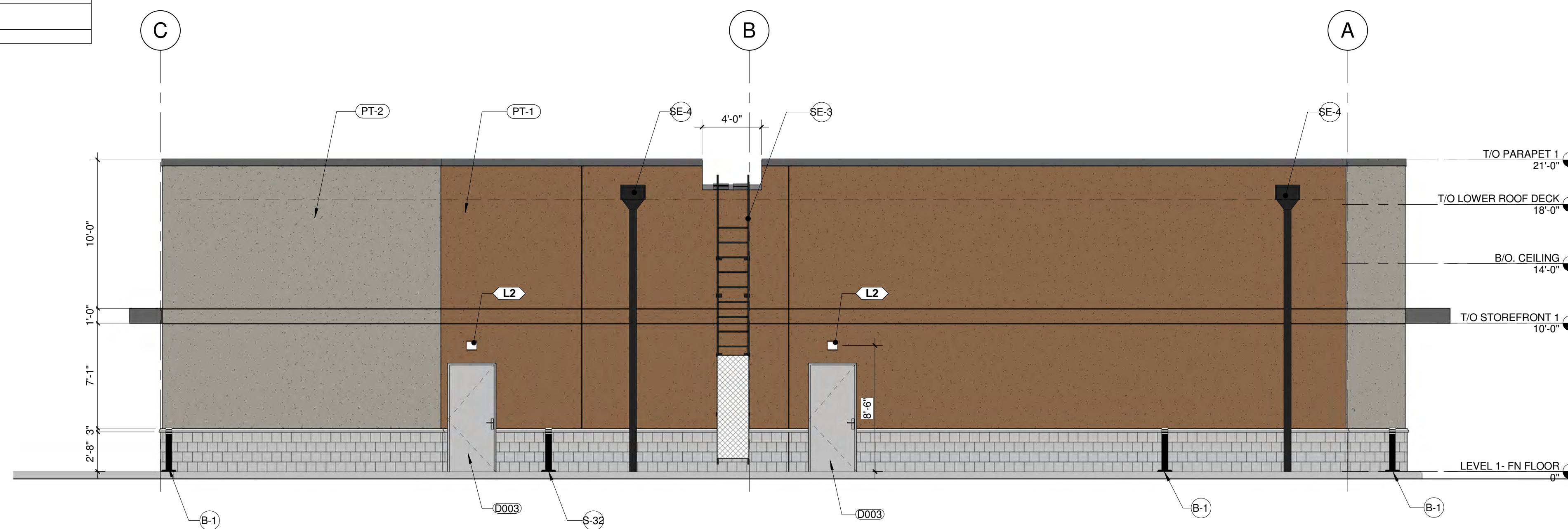
EXTERIOR ELEVATIONS

A3-01

| MATERIALS | | | |
|-----------|---|------------------------|---|
| CODE | DESCRIPTION | MANUFACTURER | MODEL |
| AIR | 1" AIR GAP | | |
| ALU | CLEAR ANODIZED ALUMINUM, MULLION TYP | | |
| BK | THIN BRICK FINISH | PINE HALL BRICK | BROWNS FERRY |
| CF-1 | CONCRETE FOUNDATION, SEE STRUCTURAL | | SEE STRUCTURAL |
| CMU2 | SPLIT RUNNING CMU, 4" THICK NOMINAL, COLOR GREY | YORK BUILDING PRODUCTS | SPLIT FACE CMU COLOR 518 FLINT |
| CMU8 | CMU, 8" NOMINAL | | |
| FL-1 | CONCRETE PAD, BROOM FINISH - SEE STRUCTURAL | | |
| FL-2 | CONCRETE SIDEWALK, AS PER INDUSTRY STANDARDS AND GOVERNMENTAL REQUIREMENTS, SEE CIVIL DRAWINGS | | |
| GR-2 | THIN MORTAR | | |
| GRD | MTL SCREEN | | |
| GYP2 | 5/8" GYP. BD. - SEE WALL DET & NOTE 1 | | |
| IG-1 | 1 IN CLEAR, TEMPERED INSULATED LOW-E W/ BLUE REFLECTION, WITH WRITTEN VERIFICATION FROM GLASS COMPANY, DUAL SEALED UNITS, SEE SCHED. | KAWNEER | LOW-E INSULATED TEMPERED GLAZING W/ BLUE REFLECTION |
| IG-2 | 1 IN CLEAR, TEMPERED INSULATED LOW-E, WITH WRITTEN VERIFICATION FROM GLASS COMPANY, DUAL SEALED UNITS, SEE SCHED. | KAWNEER | LOW-E INSULATED TEMPERED GLAZING |
| IG-3 | 1" INSULATED SPANDREL GLAZING, UP TO 10 A.F.F. SEE SCHED. | KAWNEER | INSULATED SPANDREL GLAZING |
| MS-1 | GALVANIZED WIRE MESH- LADDER GATE | | |
| P-M1 | BLACK PAINTING, MATTE FINISH, OVER GALVANIZED MTL SURFACE | SHERWIN WILLIAMS | BLACK |
| P-M3 | SIGNAGE MTL PAINT - BLACK, SATIN FINISH | | |
| PT-1 | EIFS, COMPLETE FINISH, COLOR SW9098 BAKED COOKIE | DRYVIT | COLOR SW9098 BAKED COOKIE |
| PT-2 | EIFS, COMPLETE FINISH, COLOR SW9170 ACIER | DRYVIT | COLOR SW9170 ACIER |
| PT-3 | GREY PAINTING, MATTE FINISH, OVER GALVANIZED MTL SURFACE | SHERWIN WILLIAMS | GREY |
| PT-4 | DARK GREY PAINTING, MATTE FINISH, OVER GALVANIZED MTL SURFACE | SHERWIN WILLIAMS | DARK GREY |
| PT-5 | GREY PAINTING, SATIN FINISH, OVER GALVANIZED MTL SURFACE | FIRESTONE | Duracast Dove Gray |
| PT-6 | 1/2" 18GA MTL PANEL W/ EXPOSED FASTENERS, INSTALL CORRUGATIONS ON HORIZONTAL PROVIDE ANGLES BEHIND PANELS TO 2X4IN TUBE STEEL GATE STRUCTURE. BLACK PAINT FINISH. | SHERWIN WILLIAMS | BLACK |
| PT-7 | PAINTING COAT ON EXTERIOR MTL SURFACE, COLOR BLACK, AS DTE STANDARDS. | SHERWIN WILLIAMS | |
| RF-2 | R-30 MIN. CONT RIGID INSULATION | | |
| RF-3 | WHITE 60 MILL FIRESTONE ULTRAPLY TPO MEMBRANE, MECHANICALLY FASTENED OVER 5" (2X2.6") RIGID INSULATION, MIN R-VALUE OF 20 | FIRESTONE | ULTRAPLY TPO MEMBRANE |
| SH-1 | 5/8" EXTERIOR GRADE PLYWOOD SHEATHING | | |
| SH-2 | 1/2" EXTERIOR GRADE PLYWOOD SHEATHING | | |
| SH-R | USG SHEETROCK 5/8" PANEL (UL AR) | USG | USG Sheetrock Brand 5/8" panel (UL AR) |
| ST2 | PRE CAST SILL, COLOR LIMESTONE | STONECAST | LIMESTONE |
| STD-3 | 3 1/2" DEEP 20 ga. STEEL STUDS W/ 3" MINERAL WOOL BATT INSULATION | | |
| STD-6 | 6in DEEP, 25ga. SPACED MAX 24IN O.C., W/ FIBERGLASS INSULATION | | |
| VN-1 | BLACK VINYL | | |
| VN-2 | RED VINYL | | |
| VN-3 | WHITE VINYL | | |
| VN-4 | YELLOW VINYL | | 3630-125 GOLDEN YELLOW |
| WD-1 | WOOD SLATS | | |
| WD-2 | PRESSURE TREATED PINE OR EQUIVALENT | | |
| WD-3 | WOOD SLATS | | |



3 SOUTH ELEVATION
SCALE: 3/16" = 1'-0"



4 EAST ELEVATION
SCALE: 3/16" = 1'-0"

EXTERIOR ELEVATION NOTES

- GENERAL CONTRACTOR TO COORDINATE & SCHEDULE SIGNAGE INSTALLATION WITH THE SIGNAGE CONTRACTOR PROVIDING A MINIMUM SCHEDULING NOTICE OF 4 WEEKS AND 1 WEEK PRIOR TO SCHEDULED DATE OF INSTALLATION. CONSTRUCTION MANAGER TO PROVIDE GENERAL CONTRACTOR WITH SIGNAGE CONTRACTOR CONTACT INFORMATION.
- GENERAL CONTRACTOR SHALL COORDINATE WITH ELECTRICAL CONTRACTOR TO FURNISH AND INSTALL ELECTRICAL CIRCUITS INCLUDING ALL CONDUIT, WIRE, CONNECTIONS AND BREAKER AT PANEL BOARD NECESSARY TO SERVE SIGNAGE.
- GENERAL CONTRACTOR TO PROVIDE FIRE TREATED WOOD STUD BLOCKING OR EQUIVALENT TO SUPPORT SIGNAGE.
- SIGNAGE CONTRACTOR SHALL VERIFY SIZE AND LOCATION OF ANY AND ALL ALLOWABLE MONUMENT OR POLE SIGNAGE WITH LANDLORD AND PROVIDE SHOP DRAWINGS PRIOR TO FABRICATION TO FRANCHISING'S DESIGNER FOR APPROVAL.
- SIGNAGE CONTRACTOR TO INSTALL SIGNAGE IN COMPLIANCE WITH LOCAL CODES AND OBTAIN PERMIT AND LANDLORD APPROVAL.
- SIGNAGE CONTRACTOR TO SUPPLY SHOP DRAWINGS TO FRANCHISING'S CONSTRUCTION MANAGER AND TO GENERAL CONTRACTOR AS NEEDED. GENERAL CONTRACTOR TO NOTIFY FRANCHISING'S CONSTRUCTION MANAGER IMMEDIATELY IF SHOP DRAWINGS OR INSTALLATION IS IN DISCREPANCY WITH FRANCHISING'S ARCHITECTURAL DRAWINGS.

GENERAL KEYNOTES

- B-1 NON-ILLUMINATED BOLLARD
- C10 6" DIAMETER STEEL CONCRETE FILLED PIPE BOLLARD, SEE STRUCTURAL
- C15 DERO HOOP BIKE "U" RACK, 14.5"x34"x1 5/8", 12 GA STEEL
- F-1 PASO DOUBLE CHAIR, ARMS PKG OF 2
- F-2 SQUARED TABLE, 2'X2', BLACK FINISH
- F-3 OUTDOOR UMBRELLA
- FT CONCRETE FOOTING - SEE STRUCTURAL
- IG-1 1" INSULATED LOW-E CLEAR GLAZING PANELS, DUAL SEALED UNITS.
- IG-3 1" INSULATED SPANDREL GLAZING
- L1 OUTDOOR WALL SCONCE, FLUSH MOUNT, SEE ELECTRICAL
- L2 OUTDOOR WALL SCONCE OVER SERVICE DOOR, SEE ELECTRICAL
- L4 HABIT ILLUMINATED SIGN - STACKED LOGO
- L5 HABIT MESA STANDARD ILLUMINATED LOGO
- L6 SLEEP NUMBER STANDARD LOGO
- L-A SITE POLE LIGHTING TYPE A - SEE ELECTRICAL SHEETS FOR SPECS
- L-EX EXISTING SITE POLE, NEW LOCATION - SEE ELECTRICAL
- M1 RTU#1, TYPICAL RTU LOCATION SHOWN - REFER TO TENANT CONSTRUCTION DOCUMENTS FOR EXACT LOCATION OF ALL ROOF EQUIPMENT AND PENETRATION.
- M-7 AIR CURTAIN AT DRIVE-THRU WINDOW, SEE RCP NOTE #4 AND M2-01 FOR SPECS
- P-1 SINGLE PARKING, DIM 9'x18', REFLECTIVE WHITE PAINT
- P-2 SINGLE PARKING, DIM 9'x16', REFLECTIVE WHITE PAINT
- P-3 ADA PARKING, DIM 8'x18', REFLECTIVE WHITE PAINT
- PL-1 CREEPIN JUNNIPER
- PL-2 HYDRANGEA
- PL-3 STAR JASMINE
- S-1 STOP SIGN AND PAINTED BAR, WHITE LEGEND, RED BACKGROUND
- S-2 TURN ARROW, REFLECTIVE WHITE PAINT
- S-4 RESERVED PARKING SIGN, GREEN LEGEND, WHITE BACKGROUND
- S-5 FLOOR PAINT STOP SIGN, REFLECTIVE WHITE PAINT
- S-7 FLOOR PAINT STOP ARROW, REFLECTIVE WHITE PAINT
- S-9 FLOOR PAINT ADA PARKING AREA STRIPING.
- S-19 ADA SIGN, W/ WHITE BACKGROUND, REFLECTIVE WHITE PAINT
- S-21 CAUTION STRIPED PAINTING
- S-22 MONUMENT SIGN - INTERNALLY ILLUMINATED.
- S-30 PLANTER
- S-31 TRASH DUMPSTER
- S-32 NEW CURB
- S-35 PARKING CONCRETE PROTECTION CURB
- SE2 ROOF ACCESS SERVICE LADDER WITH GATE
- SE-1 PRE-MENU BOARD
- SE-2 MENU ORDER BOARD PLACEMENT PANEL AND SPEAKER
- SE-3 8'-6" CLEARANCE BAR
- SE-4 THRU WALL SCUPPER WITH COLLECTOR HEAD AND DOWNSPOUT
- SE-5 1'x1' ROOF WALKWAY PADS
- ST2 STONE SWEEP, SEE WALL DETAILS
- ST-1 BEARING STRUCTURE, SEE STRUCTURAL
- W1 COMMERCIAL DOUBLE SLIDE THERMAL ALUMINUM WINDOW

Municipal Approval Stamps



ILLINOIS DESIGN FIRM # 184.006688
THESE DRAWINGS AND SPECIFICATIONS ARE THE CONFIDENTIAL AND PROPRIETARY PROPERTY OF DXU, LLC AND SHALL NOT BE COPIED OR REPRODUCED WITHOUT WRITTEN AUTHORIZATION.



THOMAS ENGLISH
725 E. 65TH STREET, STE 300
INDIANAPOLIS, IN 46220

Client

PROPOSED RETAIL DEVELOPMENT
1961 S. VAL VISTA DR
MESA, AZ 85204

Project

Consultant

| NO. | DATE | REVISIONS/ISSUANCES |
|-----|------------|-----------------------|
| | 02/05/2018 | ZONING/ DESIGN REVIEW |
| | 11/20/2017 | INITIAL ISSUE |

PROFESSIONAL CERTIFICATION:

I CERTIFY THAT THESE DOCUMENTS WERE PREPARED OR APPROVED BY ME, AND THAT I AM A DULY LICENSED ARCHITECT UNDER THE LAWS OF THE STATE OF ARIZONA, LICENSE NUMBER 59402.



SEAL

FOR PERMIT/ FOR BID

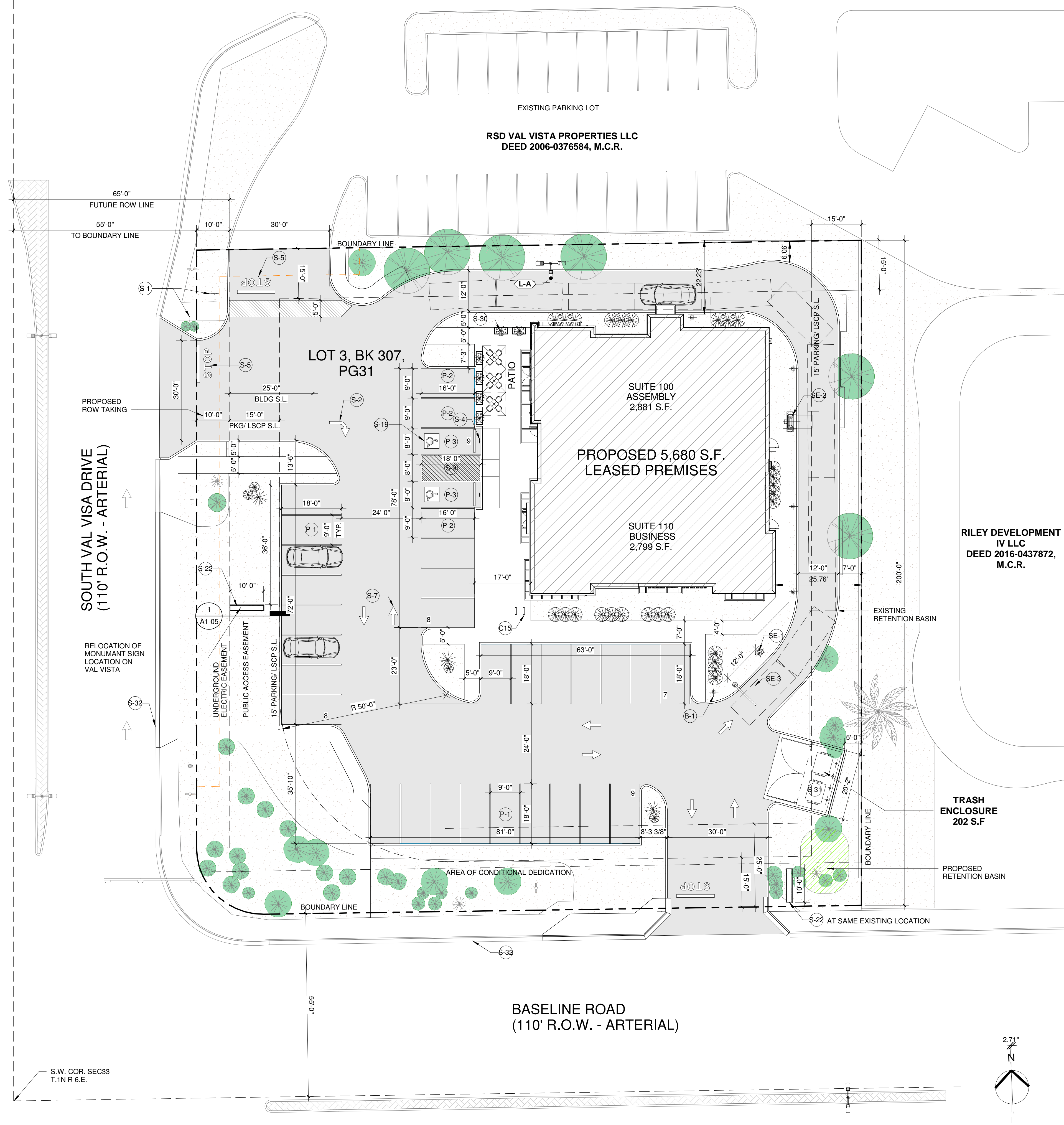
| | |
|-----------------|---------------|
| DATE: | 02/05/2018 |
| PROJECT NUMBER: | DXU#17-264 |
| SCALE: | 3/16" = 1'-0" |
| DRAWN BY: | DTE |
| CHECKED BY: | BG |
| APPROVED BY: | ES |

EXTERIOR ELEVATIONS

A3-02

| SETBACKS TABLE: | | | | |
|-----------------------|----------|-----------|----------|----------------------|
| BUILDING: | ZONING | EXISTING | PROPOSED | NOTES |
| FRONT (WEST) | 25' | 56.29' | 90.55' | 6 LANE ARTERIAL ROAD |
| REAR (EAST) | 15' | 9.46' | 25.76' | |
| SIDE (NORTH) | 15' | 18.21' | 22.23' | |
| SIDE (SOUTH) | 25' | 29.69' | 93.77' | |
| PARKING: | | | | |
| FRONT (WEST) | 15' | 120.62' | 15' | |
| REAR (EAST) | 15' | 17' | - | |
| SIDE (NORTH) | 15' | 23.57' | - | |
| SIDE (SOUTH) | 15' | 33.84' | 19.57' | |
| PARKING TABLE: | | | | |
| FRONT (WEST) | 9 STALLS | 16 STALLS | | |
| REAR (EAST) | N/A | N/A | | |
| SIDE (NORTH) | N/A | N/A | | |
| SIDE (SOUTH) | N/A | 16 STALLS | | |

SITE PLAN FOR REFERENCE USE ONLY. SEE APPROVED CIVIL SITE PLAN FOR DETAILS



ARCHITECTURAL SITE PLAN NOTES

- REFER TO EXTERIOR ELEVATIONS FOR BUILDING SIGNAGE LOCATION AND DESIGN ID. REFER TO ELECTRICAL PLANS FOR ELECTRICAL REQUIREMENTS.
- SITE EQUIPMENT, WIRELESS COMMUNICATION AND MONITORS COORDINATED BY LANDLORD. CONSTRUCTION MANAGER, REFER TO ELECTRICAL SPECIFICATIONS FOR ELECTRICAL REQUIREMENTS.
- LANDLORD IS RESPONSIBLE FOR PROVIDING SITE WORK INCLUDING BOLLARDS, FOOTING AND CONDUIT FOR SIGNAGE. COORDINATE WITH CONSTRUCTION MANAGER.
- ALL PARKING, SIGNAGE AND STRIPPING TO BE PROVIDED BY LANDLORD, AS PER INDUSTRY STANDARDS AND GOVERNMENTAL REQUIREMENTS.
- TRASH ENCLOSURE TO BE LOCKABLE USING STEEL GATES PROVIDED BY LANDLORD.
- LANDLORD TO PROVIDE HARD SURFACE PAVING (10 YEAR LIFE) INSIDE CONSTRUCTION PARKING/ DRIVEWAY AREA. LANDLORD SHALL REPAIR OR MILL AND RESURFACE THE ENTIRE PARKING LOT AREA.
- GENERAL CONTRACTOR TO APPLY CONCRETE SEALER TO ALL EXTERIOR PATIO AND WALKWAY SURFACES.
- FOR SITE SIGNAGE AND PAINTINGS, SEE A6-06 SITE SIGNAGE AND CIVIL DRAWINGS

SITE & BUILDING DATA

| | |
|----------------------------------|-------------------------|
| 1 TYPE OF CONSTRUCTION | COMMERCIAL RETAIL |
| 2 ZONING CLASSIFICATION | LC (LIMITED COMMERCIAL) |
| 3 PROPOSED ZONING CLASSIFICATION | LC (LIMITED COMMERCIAL) |
| 4 NUMBER OF STORIES: | ONE |
| 5 COMMUNITY LAND USE | SPECIALTY COMMERCIAL |
| 6 BUILDING GROSS FLOOR AREA | 5,680 S.F. |
| 7 PROPOSED BUILDING HEIGHT | 25'-0" |
| 8 ALLOWED BUILDING HEIGHT | 30'-0" |
| 9 EXISTING BUILDING HEIGHT | 17'-7" |
| 10 GROSS SITE ACREAGE | 39,551 SF |
| 11 NET SITE ACREAGE | 39,908 SF |
| 12 EXISTING LANDSCAPE AREA | 9,840.55 SF |
| 13 PROPOSED LANDSCAPE AREA | 6,399.42 SF |
| 14 PROPOSED VEHICLE PAVED AREA | 18,662.58 SF |

PARKING SCHEDULE

| TYPE | COUNT | DESCRIPTION |
|-----------------|-------|--|
| P-1 | 24 | SINGLE PARKING, DIM 9'x18', REFLECTIVE WHITE PAINT |
| P-2 | 6 | SINGLE PARKING, DIM 9'x16', REFLECTIVE WHITE PAINT |
| P-3 | 2 | ADA PARKING, DIM 8'x18', REFLECTIVE WHITE PAINT |
| Grand total: 32 | | |

REQUIRED PARKING SPACE BY USE:

- GENERAL OFFICE, RETAIL & SERVICES**
1 SPACE PER 375 S.F.
- EATING ESTABLISHMENTS (WITH DRIVE THRU WINDOW & ASSOCIATED QUEUING DRIVE AISLE):**
1 SPACE PER 100 S.F.

SITE SIGNAGE & ELEMENTS

| TYPE | COUNT | DESCRIPTION |
|------|-------|--|
| B-1 | 5 | NON-ILLUMINATED BOLLARD |
| C10 | 4 | 6" DIAMETER STEEL CONCRETE FILLED PIPE BOLLARD, SEE STRUCTURAL |
| C15 | 2 | DERO HOOP BIKE "U" RACK, 14.5"x34"x1 5/8", 12 GA STEEL |
| S-1 | 3 | STOP SIGN AND PAINTED BAR, WHITE LEGEND, RED BACKGROUND |
| S-2 | 1 | TURN ARROW, REFLECTIVE WHITE PAINT |
| S-4 | 2 | RESERVED PARKING SIGN, GREEN LEGEND, WHITE BACKGROUND |
| S-5 | 3 | FLOOR PAINT STOP SIGN, REFLECTIVE WHITE PAINT |
| S-7 | 7 | FLOOR PAINT STOP ARROW, REFLECTIVE WHITE PAINT |
| S-9 | 1 | FLOOR PAINT ADA PARKING AREA STRIPING |
| S-19 | 2 | ADA SIGN, W/ WHITE BACKGROUND, REFLECTIVE WHITE PAINT |
| S-21 | 1 | CAUTION STRIPED PAINTING |
| S-22 | 2 | MONUMENT SIGN - INTERNALLY ILLUMINATED. |
| S-30 | 6 | PLANTER |
| S-31 | 2 | TRASH DUMPSTER |
| S-32 | 2 | NEW CURB |
| S-35 | 2 | PARKING CONCRETE PROTECTION CURB |
| SE-1 | 1 | PRE-MENU BOARD |
| SE-2 | 1 | MENU ORDER BOARD PLACEMENT PANEL AND SPEAKER |
| SE-3 | 1 | 8'-6" CLEARANCE BAR |

| ZONING: | |
|----------|-------------------------|
| EXISTING | LC (LIMITED COMMERCIAL) |
| PROPOSED | LC (LIMITED COMMERCIAL) |

PHASING LEGEND

| | |
|--|--------------------|
| | EXISTING TO REMAIN |
| | TO BE DEMOLISHED |
| | NEW |

Municipal Approval Stamps



DXU ARCHITECTS
404 S. Wells Street, 3rd Floor, Chicago, IL 60607
P: 312.955.0334 www.dxuarch.com

ILLINOIS DESIGN FIRM # 184.006688
THESE DRAWINGS AND SPECIFICATIONS ARE THE CONFIDENTIAL AND PROPRIETARY PROPERTY OF DXU LLC, AND SHALL NOT BE COPIED OR REPRODUCED WITHOUT WRITTEN AUTHORIZATION.

Thomas English
Retail Real Estate

THOMAS ENGLISH
725 E. 65TH STREET, STE 300
INDIANAPOLIS, IN 46220

Client

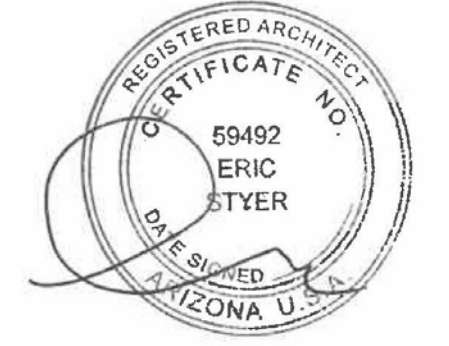
PROPOSED RETAIL DEVELOPMENT
1961 S. VAL VISTA DR
MESA, AZ 85204

Project

Consultant

| NO. | DATE | REVISIONS/ISSUANCES |
|-----|------------|----------------------|
| | 02/05/2018 | ZONING/ DEIGN REVIEW |
| | 11/20/2017 | INITIAL ISSUE |

PROFESSIONAL CERTIFICATION:
I CERTIFY THAT THESE DOCUMENTS WERE PREPARED OR APPROVED BY ME, AND THAT I AM A DULY LICENSED ARCHITECT UNDER THE LAWS OF THE STATE OF ARIZONA, LICENSE NUMBER 59402.



SEAL

FOR PERMIT/ FOR BID

DATE: 02/05/2018
PROJECT NUMBER: DXU#17-264
SCALE: As indicated
DRAWN BY: DTE
CHECKED BY: BG
APPROVED BY: ES

SITE PLAN - PROPOSED

A1-03



1 SITE - EXISTING
SCALE:



2 SITE - EXISTING + DEMO
SCALE:



3 SITE - PROPOSED
SCALE:

DXU
ARCHITECTS
404 S. Wells Street, 3rd Floor, Chicago, IL 60607
P: 312.955.0334 www.dxuarch.com

ILLINOIS DESIGN FIRM # 184.006688
THESE DRAWINGS AND SPECIFICATIONS ARE THE CONFIDENTIAL AND PROPRIETARY PROPERTY OF DXU, LLC, AND SHALL NOT BE COPIED OR REPRODUCED WITHOUT WRITTEN AUTHORIZATION.

Thomas English
Retail Real Estate

THOMAS ENGLISH
725 E. 65TH STREET, STE 300
INDIANAPOLIS, IN 46220

Client

PROPOSED RETAIL DEVELOPMENT
1961 S. VAL VISTA DR
MESA, AZ 85204

Project

Consultant

| NO. | DATE | REVISIONS/ISSUANCES |
|------------|----------------------|---------------------|
| 02/05/2018 | ZONING/ DEIGN REVIEW | |
| 11/20/2017 | INITIAL ISSUE | |

PROFESSIONAL CERTIFICATION:
I CERTIFY THAT THESE DOCUMENTS WERE PREPARED OR APPROVED BY ME, AND THAT I AM A DULY LICENSED ARCHITECT UNDER THE LAWS OF THE STATE OF ARIZONA, LICENSE NUMBER 59402.



SEAL

FOR PERMIT/ FOR BID

DATE: 02/05/2018
PROJECT NUMBER: DXU#17-264
SCALE:
DRAWN BY: DTE
CHECKED BY: BG
APPROVED BY: ES

SITE - PERSPECTIVES

A1-04



Thomas English Retail Real Estate, LLC
725 East 65th Street, Suite 300 | Indianapolis, IN 46220
T: 317-574-7448 | www.thomasenglish.com

FOLLOW-UP SUBMITTAL FOR P&Z SUBMITTAL ZON17-00597

DATE: February 5, 2018

PROJECT NAME: 1961 VAL VISTA REDEVELOPMENT

PROJECT NARRATIVE: The site is approximately 0.916 net acres or ±39,906' SF and is currently an operating Circle K gas station. The gas station consists of one building approximately 1,262' SF, ten (10) pumps for refueling under a canopy approximately 17.7' ft. in height and 4,402' SF, and approximately three (3) underground storage tanks for fuel. Prior to implementing our redevelopment plan, all existing improvements will be removed in accordance with Arizona Department of Environmental Quality UST guidelines and procedures. All environmental concerns will be alleviated during this process and a letter from the ADEQ indicating No Further Action (NFA) will be obtained (if required). Once the site has been remediated to standards permissible for commercial development, we proposed to construct a 5,680' SF multi-tenant commercial building with a drive-through for restaurant and general retail uses. The two proposed uses are permitted in the Limited Commercial (C-2) zoning district. and are service restaurant (with drive-thru) and general retail. A total of 32 parking spaces will be provided and 9 stalls for drive-thru stacking.

EXISTING DECLARATION: In response to Staff comments received January 11,2018, it is important to note the existing covenants & restrictions that encumber the property. The site is part of Baseline Commercial Center (Lot 2, according to Book 307 of Maps, Page 31, records of Maricopa County, AZ). As a part of that original development there was a Declaration recorded in 1986 that restricts the future redevelopment of that Lot 2 to fit a building within a specific building area (see attached Exhibit A). Lot 3 of the original Baseline Commercial Center has since been subdivided many times and there are currently 64 APNs and 12 separate land owners (see attached Exhibit A_1). This restricted building area significantly impacts the future redevelopment of the site as it relates to the Mesa 2040 General Plan. It is extremely difficult to formulate a design layout that satisfies all the criteria for the General Plan due to the recorded covenants. We do believe that our current design significantly improves the quality of retail in the area and includes many of the critical attributes sought after in the General Plan.

RESPONSE TO STAFF COMMENTS:

1. **Citizen Participation Plan** – A revised Citizen Participation Plan with a list of all land owners within 1,000 feet and all HOAs and registered neighborhoods within 1 mile has been resubmitted.
2. **Notification** – Letters will be delivered to City of Mesa Development Services 2 weeks prior to our hearing.
3. **Mesa 2040 General Plan** –
 - We have 2 added sidewalks at the southwest corner of the property to better encourage pedestrian activity to our development. Enhanced hardscape features have also been added to the southeast corner to improve the aesthetics and be a

better complement to the adjacent corners of the intersection at Val Vista and Baseline. 1 additional sidewalk has also been added at the north property line to encourage pedestrian connectivity from the adjacent in-line strip center to the north of the site. It is also important to note, regarding Mesa 2040 General Plan, there are no residential dwellings adjacent or in close proximity to the subject property. The nearest residential area is more than 700' ft away and separated from our site by a large commercial development with multiple buildings.

- Another significant concern raised by Staff regarding our original layout were to two (2) dead-end drive aisles. We attempted to address Staff's concerns by adding multiple turn-around stalls, along with other minor site modifications to improve traffic circulation for the site. Staff suggested additional modifications could be made to better improve the layout. The current site plan eliminates the dead-end drive aisles and significantly improves the overall vehicular circulation of the site. The current site plan is also more open and therefore encourages pedestrian connectivity through and around our site by utilizing numerous connections points.
 - 2 bicycle racks have been added in the front foundation setback area to encourage citizens using that mode of active transportation and bicycle enthusiast to view our site as a friendlier environment to visit and one that supports that that lifestyle.
4. **Landscape Design** – We have significantly enhanced the landscape area at the southwest corner of the property, and also added hardscape features. This plan will greatly improve the sense of place and help serve as a gateway corner as you enter the city limits of Mesa. Installation and irrigation information will be provided in our Construction Documents.

CONCLUSION:

We believe that our revised site plan is a much stronger design and layout that will significantly improve vehicular circulation and reduce trip-time durations. Given that our site is not backed by any residential developments, the revised layout encourages pedestrian connectivity and adds multiple points of ingress and egress for pedestrian traffic. Bicycle connectivity has also improved with the added bike racks and multiple points of access. The current design will be a great compliment to the surrounding shops and serve as a quality retail destination for the citizens in the surrounding community into the future.

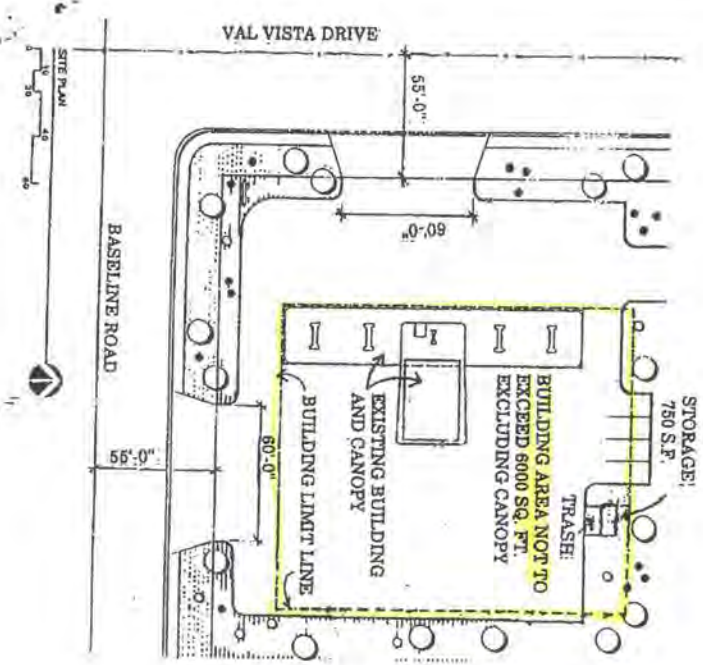
I appreciate your time in advance, and if you have any questions or need additional information, please contact me at (317) 574-7448 or email me at mrykovich@thomasenglish.com.

Sincerely,

Mark J. Rykovich, CCIM
Development Manager

EXHIBIT A

EXISTING DECLARATION - SITE PLAN



NOTE:

This is an exhibit of a recorded document. The area highlighted in yellow and labeled "BUILDING LIMIT LINE" is the limitations for where a future building may be developed/ redeveloped. See attached exhibit A_1 for all the parcels encompassed within this Declaration.

- GENERAL NOTES**
1. ALL UTILITIES WILL BE PLACED UNDERGROUND.
 2. DEVELOPMENT AND USE OF THIS SITE WILL CONFORM TO ALL APPLICABLE CODES AND ORDINANCES.
 3. ALL SIGNS WILL CONFORM TO THE SIGN ORDINANCE.
 4. OWNERS OF THIS PROPERTY WILL HAVE RESPONSIBILITY FOR MAINTAINING ALL LANDSCAPE WITHIN ADJACENT PUBLIC RIGHTS-OF-WAY IN ACCORDANCE WITH APPROVED PLANS.
 5. PROVIDE MINIMUM 1.5 GAL. TREE AT END OF EACH PARKING ROW. PROVIDE MINIMUM 1-15 GAL. TREE 25' O.C. AT PERIMETER OF SITE.
- LANDSCAPE LEGEND**
- 15 GALLON TREE
 - 5 GALLON TREE
 - 1 GALLON TREE
 - GROUND COVER
 - GRASS AREA OR PLANT MATERIAL

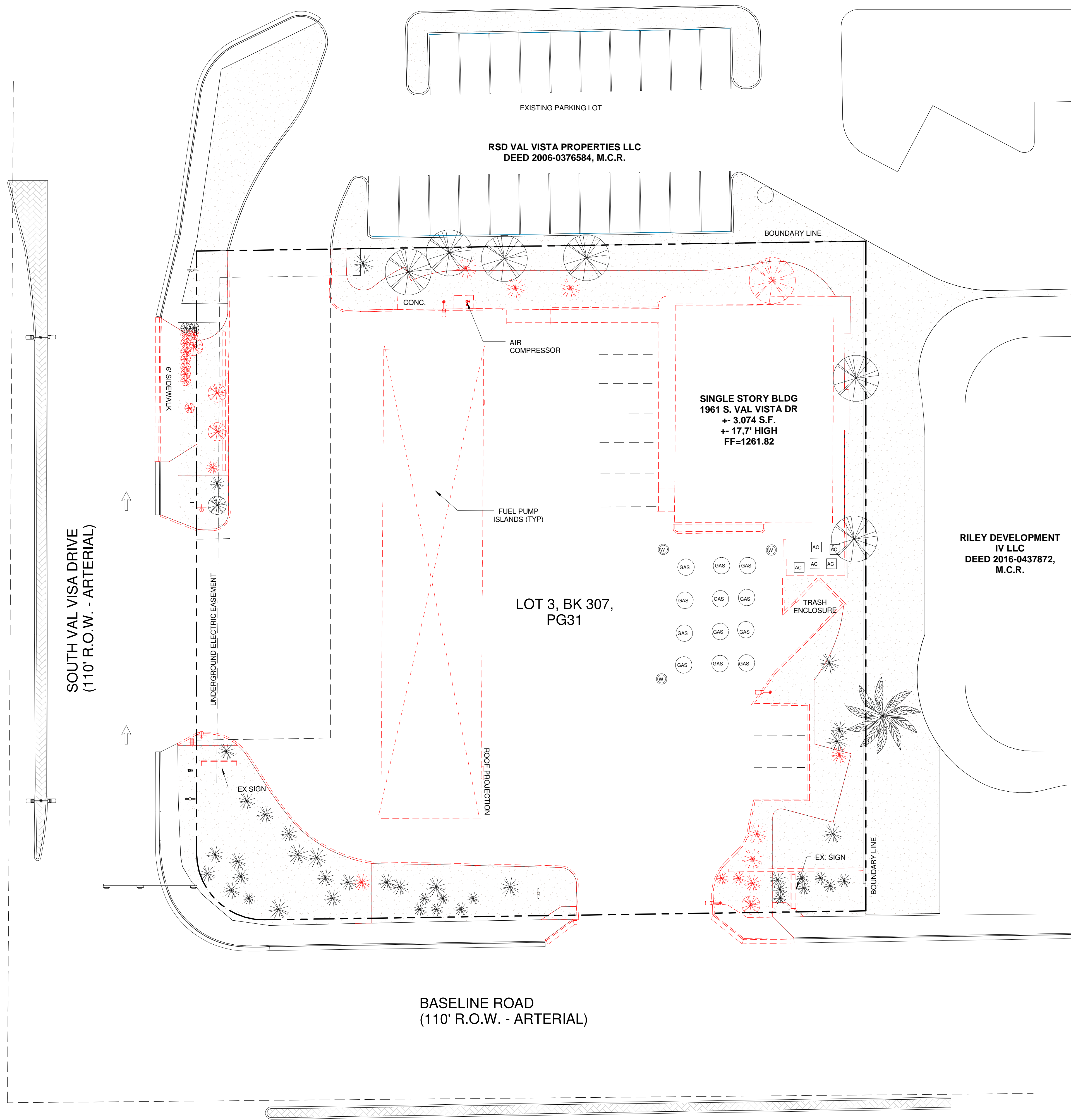
NOTE: LANDSCAPE PLACEMENT AND QUANTITIES ARE FOR ILLUSTRATION PURPOSES ONLY. FINAL PLACEMENT AND QUANTITIES WILL COMPLY WITH ALL CITY OF MESA CODES AND ORDINANCES FOR FINAL SITE PLAN APPROVAL FOR CONSTRUCTION.



D M S Di Bella ◊ Murphy ◊ Soemisch i.c.
 Architects Planners
 10 W. Main St.
 Suite 200
 Mesa, AZ 85201
 (602) 655-0633
 Fax 655-0632

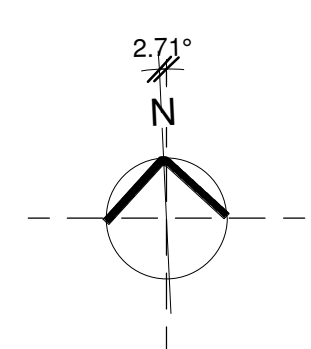


Revised
 EXHIBIT C



PHASING LEGEND*

- EXISTING TO REMAIN
- TO BE DEMOLISHED
- NEW



Municipal Approval Stamps



ILLINOIS DESIGN FIRM # 184.006688
THESE DRAWINGS AND SPECIFICATIONS ARE THE CONFIDENTIAL AND PROPRIETARY PROPERTY OF DXU LLC, AND SHALL NOT BE COPIED OR REPRODUCED WITHOUT WRITTEN AUTHORIZATION.



THOMAS ENGLISH
725 E. 65TH STREET, STE 300
INDIANAPOLIS, IN 46220

Client

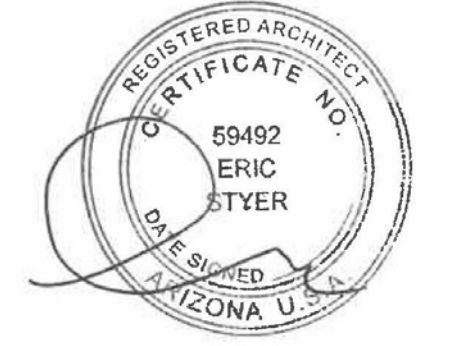
PROPOSED RETAIL DEVELOPMENT
1961 S. VAL VISTA DR
MESA, AZ 85204

Project

Consultant

| NO. | DATE | REVISIONS/ISSUANCES |
|------------|----------------------|---------------------|
| 02/05/2018 | ZONING/ DEIGN REVIEW | |
| 11/20/2017 | INITIAL ISSUE | |

PROFESSIONAL CERTIFICATION:
I CERTIFY THAT THESE DOCUMENTS WERE PREPARED OR APPROVED BY ME, AND THAT I AM A DULY LICENSED ARCHITECT UNDER THE LAWS OF THE STATE OF ARIZONA, LICENSE NUMBER 59402.



SEAL

FOR PERMIT/ FOR BID

| | |
|-----------------|--------------|
| DATE: | 02/05/2018 |
| PROJECT NUMBER: | DXU#17-264 |
| SCALE: | As indicated |
| DRAWN BY: | DTE |
| CHECKED BY: | BG |
| APPROVED BY: | ES |

SITE PLAN - DEMO

A1-02



ILLINOIS DESIGN FIRM # 184.006688
THESE DRAWINGS AND SPECIFICATIONS ARE THE CONFIDENTIAL AND PROPRIETARY PROPERTY OF DXU LLC AND SHALL NOT BE COPIED OR REPRODUCED WITHOUT WRITTEN AUTHORIZATION.

Thomas English
Retail Real Estate

THOMAS ENGLISH
725 E. 65TH STREET, STE 300
INDIANAPOLIS, IN 46220

Client

PROPOSED RETAIL DEVELOPMENT
1961 S. VAL VISTA DR
MESA, AZ 85204

Project

Consultant

| | |
|------------|----------------------|
| 02/05/2018 | ZONING/ DEIGN REVIEW |
| 11/20/2017 | INITIAL ISSUE |

NO. DATE REVISIONS/ISSUANCES

PROFESSIONAL CERTIFICATION:
I CERTIFY THAT THESE DOCUMENTS WERE PREPARED OR APPROVED BY ME, AND THAT I AM A DULY LICENSED ARCHITECT UNDER THE LAWS OF THE STATE OF ARIZONA, LICENSE NUMBER 59402.



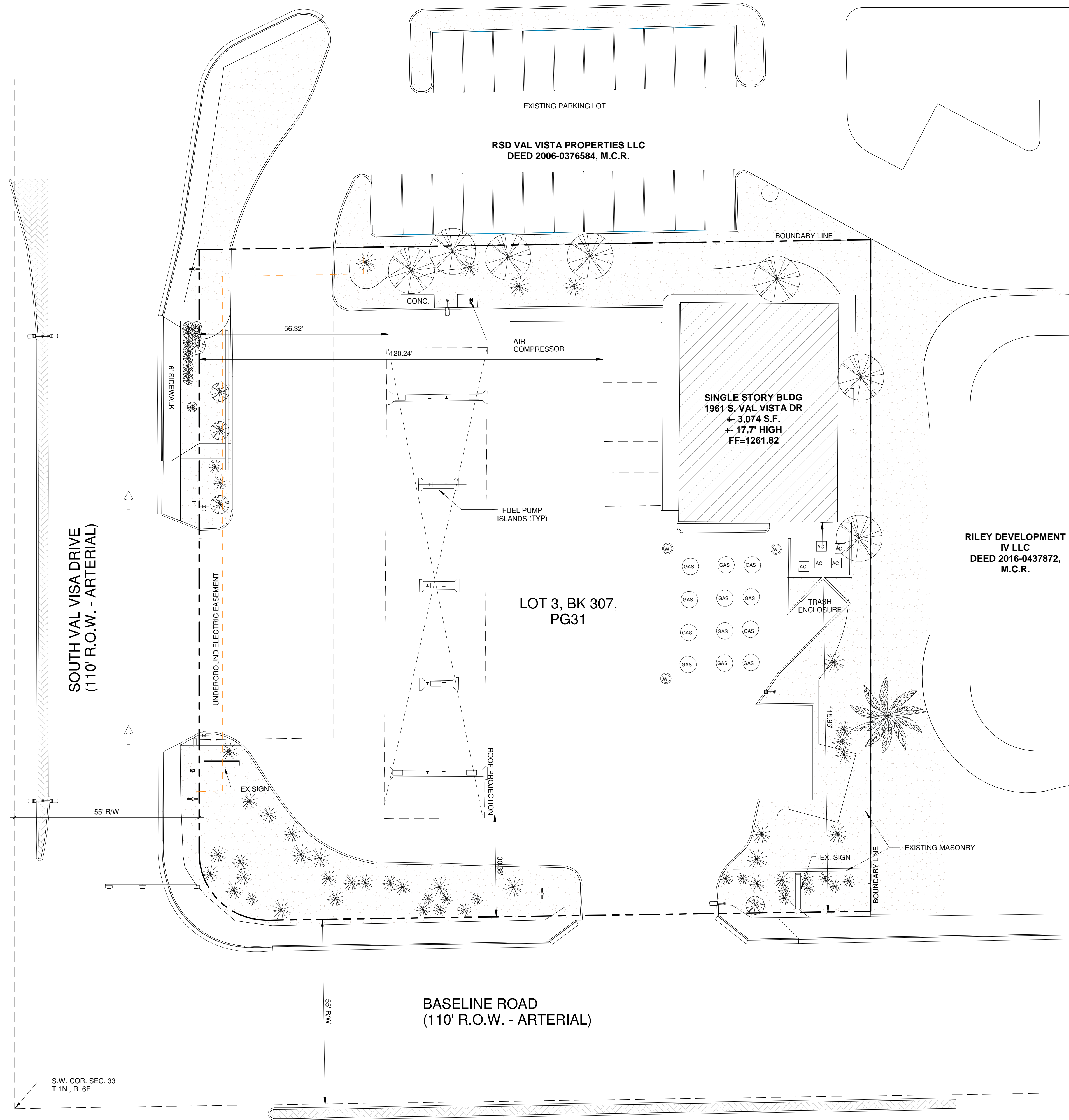
SEAL

FOR PERMIT/ FOR BID

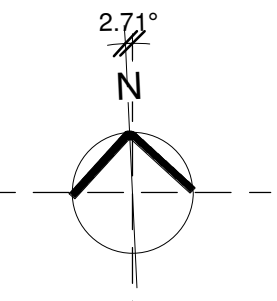
DATE: 02/05/2018
PROJECT NUMBER: DXU#17-264
SCALE: 1/16" = 1'-0"
DRAWN BY: DTE
CHECKED BY: BG
APPROVED BY: ES

SITE PLAN - EXISTING

A1-01

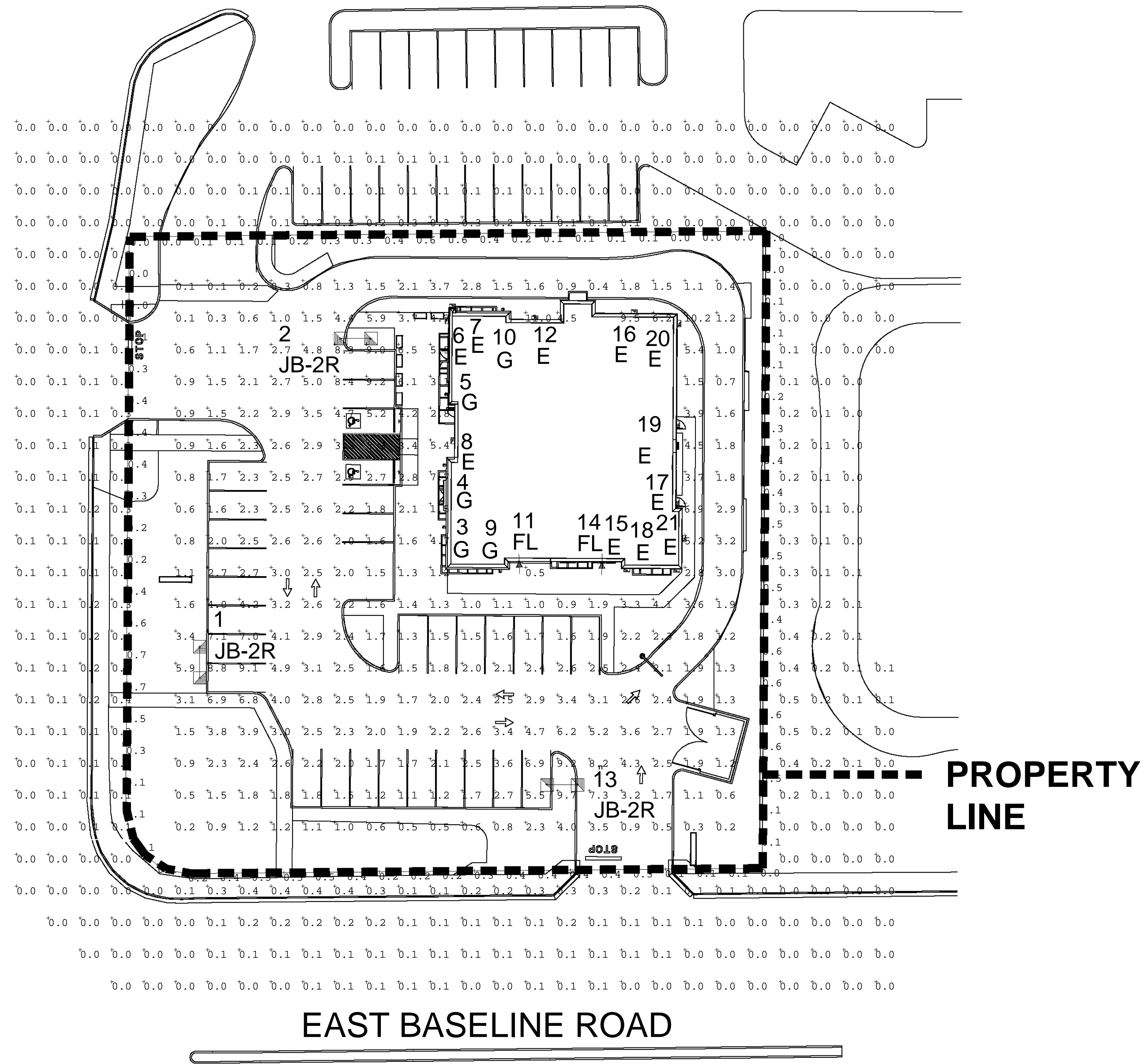


EXISTING SITE PLAN FOR REFERENCE
USE ONLY. SEE CIVIL SITE PLAN FOR
DETAILS



1 SITE PLAN - EXISTING
SCALE: 1/16" = 1'-0"

SOUTH VAL VISTA DRIVE



1 LED PHOTOMETRIC PLAN
SCALE: 1" = 20'



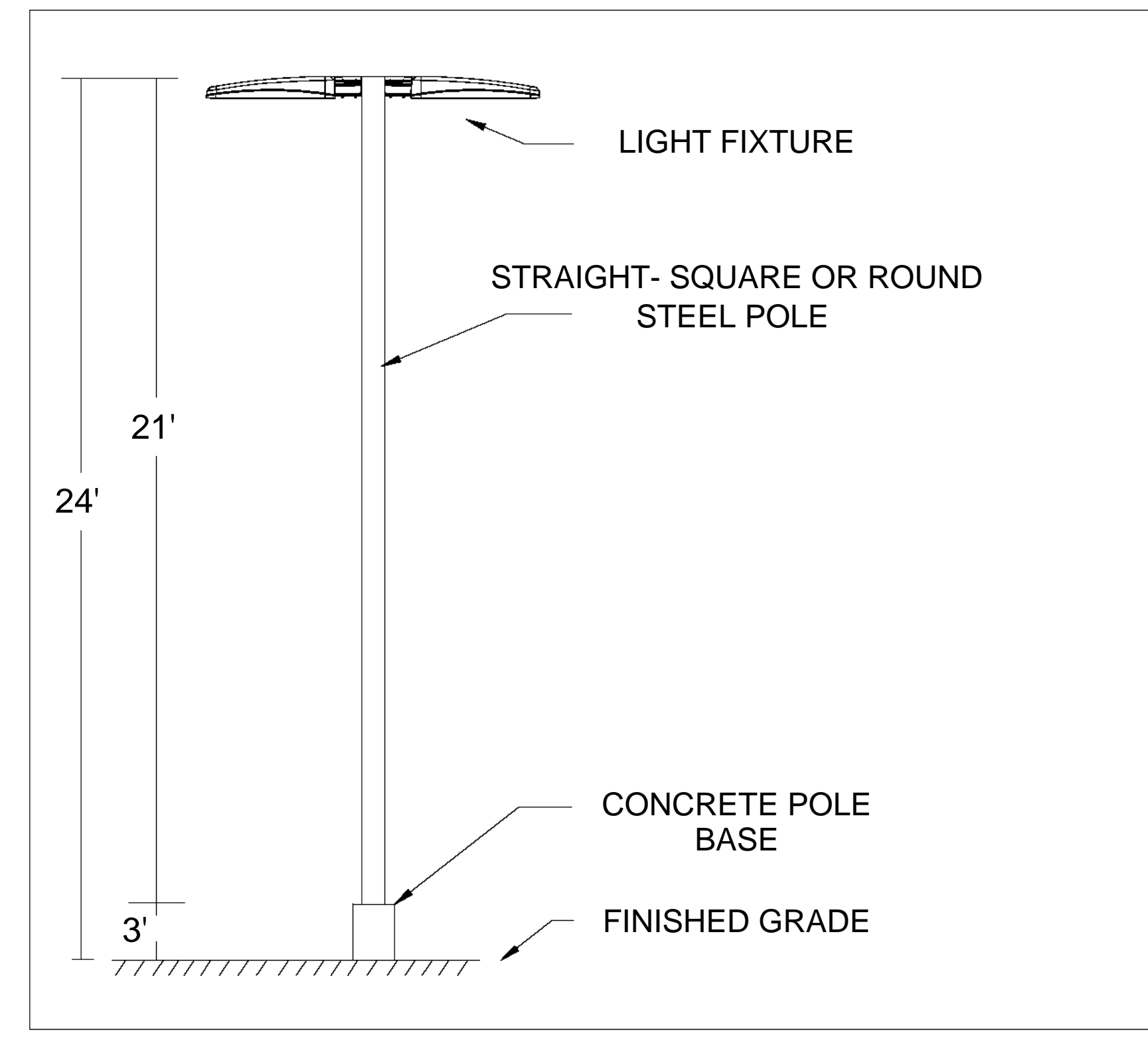
| Label | Avg | Max | Min | Avg/Min | Max/Min | # Pts |
|-------------------------------|------|------|-----|---------|---------|-------|
| Property + 40 Ft | 1.20 | 11.0 | 0.0 | N.A. | N.A. | 635 |
| Property Line | 0.28 | 0.7 | 0.0 | N.A. | N.A. | 79 |
| Drive Entry & Exit - Top Left | 2.03 | 8.2 | 0.1 | 20.30 | 82.00 | 28 |
| Drive Thru & Back | 3.39 | 11.0 | 0.4 | 8.48 | 27.50 | 53 |
| Main Parking | 2.87 | 9.2 | 0.5 | 5.74 | 18.40 | 126 |

| Symbol | Qty | Label | Arranged | TLL | LLF | Description | BUG Rating |
|--------|-----|-------|----------------|------|------|---|------------|
| | 11 | E | SINGLE | N.A. | 0.90 | New Fixt 30W LED T2 8'-0 To 14'-0 Mtg Ht Wall Mt (4000K/X LED's/2820 Lumens/XXXmA) Sylvania Slim Wall Pack #74192 SLMWPK1A-030UNV740-CO-XX-X | B1-U0-G1 |
| | 2 | FL | SINGLE | 1858 | 0.90 | New Wall Wash Flood 25W LED 5x5 FG 1'-0 Mtg Ht (4000K/12 LED's/2507 Lumens/700mA) Hubbell Beacon Flood FL-1_12NB-25-4K-5x5-UNV | N.A. |
| | 5 | G | SINGLE | N.A. | 0.90 | New Fixt 28W LED T5 VS 7'-0 Mtg Ht Up-Dn Wall Mt (3500K/X LED's/2600-2600 Lumens/110mA) Contech Lighting 6Dia Cyl X 16.25H Sconce CYL6435KMVDUDXNCLR-BZ | B2-U0-G0 |
| | 3 | JB-2R | ROTATED OPTICS | N.A. | 0.90 | New Base, Pole & Fixt 105W LED T4 24'-0 Mtg Ht (4000K/48 LED's/12819 Lumens/700mA) Visionaire VSX-1-T4-48LC-7-4K-XXX | B2-U0-G3 |

BASED ON THE INFORMATION PROVIDED, ALL DIMENSIONS AND LUMINAIRE LOCATIONS SHOWN REPRESENT RECOMMENDED POSITIONS. THE ENGINEER AND/OR ARCHITECT MUST DETERMINE APPLICABILITY OF THE LAYOUT TO EXISTING OR FUTURE FIELD CONDITIONS.

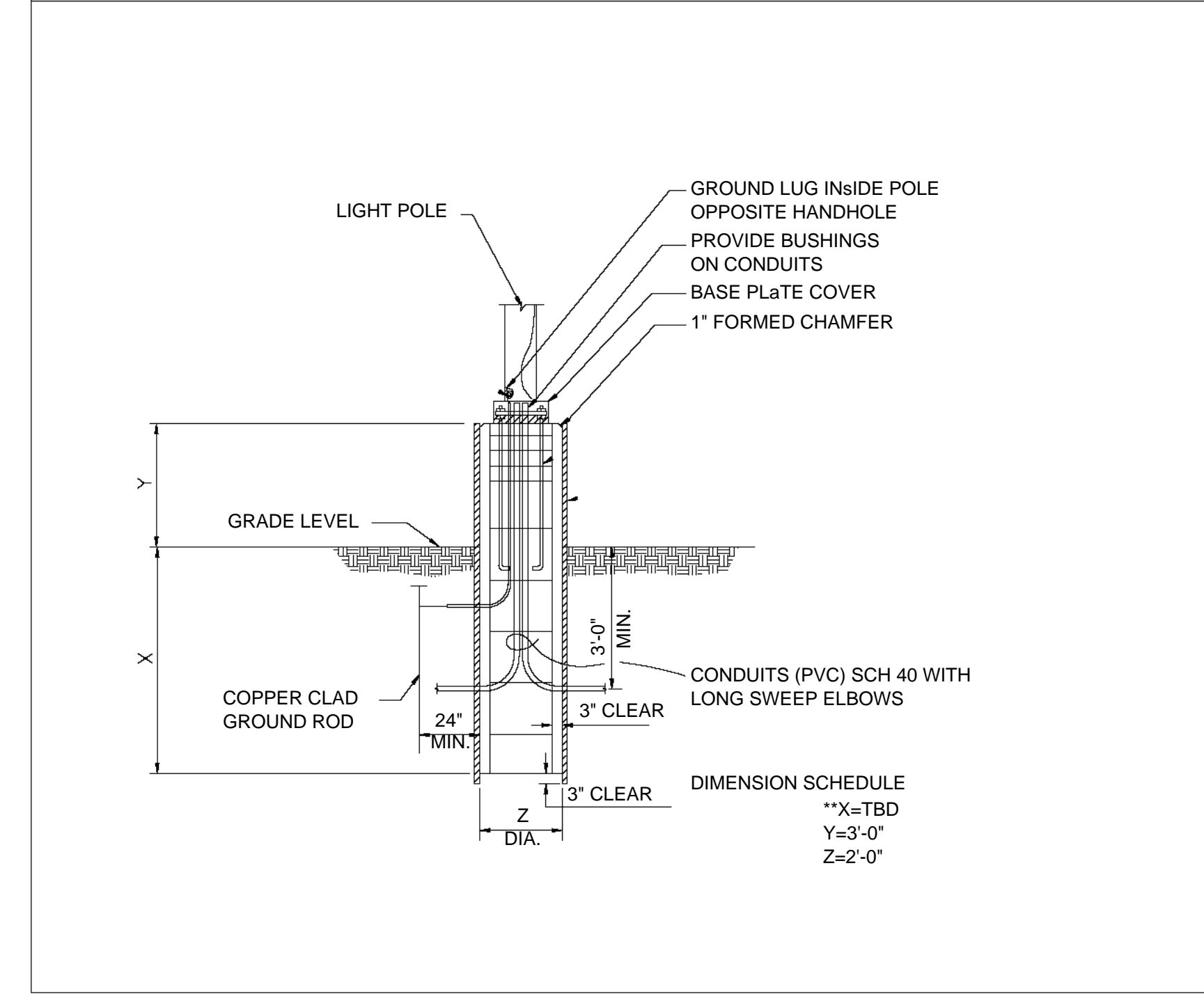
THE LIGHTING PATTERN REPRESENTS ILLUMINATION LEVELS CALCULATED FROM LABORATORY DATA TAKEN UNDER THE CONTROLLED CONDITIONS UTILIZING CURRENT INDUSTRY STANDARD LAMP RATINGS IN ACCORDANCE WITH ILLUMINATING ENGINEERING SOCIETY APPROVED METHODS. ACTUAL PERFORMANCE OF ANY MANUFACTURER'S LUMINAIRE MAY VARY DUE TO VARIATION IN ELECTRICAL VOLTAGE, TOLERANCE IN LAMPS, AND OTHER VARIABLE FIELD CONDITIONS.

FOR ADDITIONAL LIGHTING INFORMATION CONTACT:
On-Site Lighting & Survey, LLC
 PH: 763.684.1548



2 POLE DETAIL PARKING LOT
SCALE: NTS

**THIS POLE FOOTING DETAIL IS TYPICAL, FOR INFORMATIONAL PURPOSES ONLY; ACTUAL FOOTING SHOULD BE DESIGNED FOR THE SPECIFIC APPLICATION AND LOCATION WITH CONSIDERATION TO ACTUAL REQUIRED SEISMIC, SOIL, WIND LOAD CONDITIONS, ETC.



3 LIGHT POLE BASE DETAIL TYP.
SCALE: NTS

On-Site Lighting & Survey, LLC

1111 HIGHWAY 25 NORTH
SUITE 201
BUFFALO MN 55313
PH: 763.684.1548
FAX: 763.682.9048

PROJECT INFO
1961 VAL VISTA HABIT
 1961 VAL VISTA DRIVE
 MESA, AZ 85204

ENGINEER INFO

ENGINEER SEAL

OWNER INFO
THOMES ENGLISH RETAIL REAL ESTATE
 725 EAST 65TH STREET
 SUITE 300
 INDIANAPOLIS, IN 46220

| # | DATE | INIT | DESCRIPTION |
|---|------------|---------|-----------------------------|
| 1 | 01.02.2018 | JCM | UPDATE SPECIFICATION SHEETS |
| 2 | 01.10.2018 | JCM | FIXTURE RESELECTION |
| 3 | 02.05.2018 | GAC/ZPN | NEW SITE PLAN |

LED PHOTOMETRIC PLAN

PROJECT #
TE171228-2

ISSUE DATE
12.28.2017

DESIGN LEVEL
N/A

AGI
Z. NORDIN

CAD
J. MACKEY

SHEET # SL3.0 **REV #** 3

SYLVANIA
LEDVANCE Luminaires
Slim Wall Pack

Product Features
The Wall Pack luminaire is an environmentally preferable LED alternative to traditional HID or fluorescent luminaires, offering up to 80% in energy savings. Major pieces of traditional luminaires, such as ballasts, ballast drivers, and ballast sockets, are not required for LED luminaires. The standard color is white, outdoor colors, walrus, and silver.

Weight Comparison Chart

| Traditional Fixture | Traditional System Weight | LED System Weight | Energy Savings |
|---------------------|---------------------------|-------------------|----------------|
| 50 W CFL | 23 | 13 | 43% |
| 100 W CFL | 75 | 39 | 48% |
| 150 W CFL | 125 | 58 | 54% |
| 100 W CFL | 82 | 38 | 53% |
| 70 W CFL | 61 | 28 | 54% |
| 50 W CFL | 41 | 18 | 56% |
| 100 W CFL | 75 | 39 | 48% |
| 150 W CFL | 125 | 58 | 54% |
| 100 W CFL | 75 | 39 | 48% |
| 150 W CFL | 125 | 58 | 54% |
| 175 W CFL | 170 | 89 | 48% |

Ordering Criteria

Item Number: 74192

SYLVANIA logo

Photometric Data

Subtype: CYL6435KMVDUDXNC
Subtype: CYL6435KMVDUDXNC
Subtype: CYL6435KMVDUDXNC

Ordering Information

| Item Number | Subtype | Power (W) | Beam Angle (°) | Color Temp (K) | Beam Spread (ft) | Total Lumens | LPW* | Beam Spread (ft) | Beam Spread (ft) | Options |
|-------------|---------------------------|-----------|----------------|----------------|------------------|--------------|------|------------------|------------------|---------|
| 74192 | SYLVANIA CYL6435KMVDUDXNC | 15 | 120 | 2700K | 4.8 | 5000 | 104 | 3.9 | 11.0 | — |
| 74193 | SYLVANIA CYL6435KMVDUDXNC | 15 | 120 | 3000K | 4.8 | 5000 | 104 | 3.9 | 11.0 | — |
| 74194 | SYLVANIA CYL6435KMVDUDXNC | 15 | 120 | 3500K | 4.8 | 5000 | 104 | 3.9 | 11.0 | — |
| 74195 | SYLVANIA CYL6435KMVDUDXNC | 15 | 120 | 4000K | 4.8 | 5000 | 104 | 3.9 | 11.0 | — |
| 74196 | SYLVANIA CYL6435KMVDUDXNC | 15 | 120 | 4500K | 4.8 | 5000 | 104 | 3.9 | 11.0 | — |
| 74197 | SYLVANIA CYL6435KMVDUDXNC | 15 | 120 | 5000K | 4.8 | 5000 | 104 | 3.9 | 11.0 | — |
| 74198 | SYLVANIA CYL6435KMVDUDXNC | 15 | 120 | 5500K | 4.8 | 5000 | 104 | 3.9 | 11.0 | — |
| 74199 | SYLVANIA CYL6435KMVDUDXNC | 15 | 120 | 6000K | 4.8 | 5000 | 104 | 3.9 | 11.0 | — |
| 74200 | SYLVANIA CYL6435KMVDUDXNC | 15 | 120 | 6500K | 4.8 | 5000 | 104 | 3.9 | 11.0 | — |
| 74201 | SYLVANIA CYL6435KMVDUDXNC | 15 | 120 | 7000K | 4.8 | 5000 | 104 | 3.9 | 11.0 | — |
| 74202 | SYLVANIA CYL6435KMVDUDXNC | 15 | 120 | 7500K | 4.8 | 5000 | 104 | 3.9 | 11.0 | — |
| 74203 | SYLVANIA CYL6435KMVDUDXNC | 15 | 120 | 8000K | 4.8 | 5000 | 104 | 3.9 | 11.0 | — |
| 74204 | SYLVANIA CYL6435KMVDUDXNC | 15 | 120 | 8500K | 4.8 | 5000 | 104 | 3.9 | 11.0 | — |
| 74205 | SYLVANIA CYL6435KMVDUDXNC | 15 | 120 | 9000K | 4.8 | 5000 | 104 | 3.9 | 11.0 | — |
| 74206 | SYLVANIA CYL6435KMVDUDXNC | 15 | 120 | 9500K | 4.8 | 5000 | 104 | 3.9 | 11.0 | — |
| 74207 | SYLVANIA CYL6435KMVDUDXNC | 15 | 120 | 10000K | 4.8 | 5000 | 104 | 3.9 | 11.0 | — |
| 74208 | SYLVANIA CYL6435KMVDUDXNC | 15 | 120 | 10500K | 4.8 | 5000 | 104 | 3.9 | 11.0 | — |
| 74209 | SYLVANIA CYL6435KMVDUDXNC | 15 | 120 | 11000K | 4.8 | 5000 | 104 | 3.9 | 11.0 | — |
| 74210 | SYLVANIA CYL6435KMVDUDXNC | 15 | 120 | 11500K | 4.8 | 5000 | 104 | 3.9 | 11.0 | — |
| 74211 | SYLVANIA CYL6435KMVDUDXNC | 15 | 120 | 12000K | 4.8 | 5000 | 104 | 3.9 | 11.0 | — |
| 74212 | SYLVANIA CYL6435KMVDUDXNC | 15 | 120 | 12500K | 4.8 | 5000 | 104 | 3.9 | 11.0 | — |
| 74213 | SYLVANIA CYL6435KMVDUDXNC | 15 | 120 | 13000K | 4.8 | 5000 | 104 | 3.9 | 11.0 | — |
| 74214 | SYLVANIA CYL6435KMVDUDXNC | 15 | 120 | 13500K | 4.8 | 5000 | 104 | 3.9 | 11.0 | — |
| 74215 | SYLVANIA CYL6435KMVDUDXNC | 15 | 120 | 14000K | 4.8 | 5000 | 104 | 3.9 | 11.0 | — |
| 74216 | SYLVANIA CYL6435KMVDUDXNC | 15 | 120 | 14500K | 4.8 | 5000 | 104 | 3.9 | 11.0 | — |
| 74217 | SYLVANIA CYL6435KMVDUDXNC | 15 | 120 | 15000K | 4.8 | 5000 | 104 | 3.9 | 11.0 | — |
| 74218 | SYLVANIA CYL6435KMVDUDXNC | 15 | 120 | 15500K | 4.8 | 5000 | 104 | 3.9 | 11.0 | — |
| 74219 | SYLVANIA CYL6435KMVDUDXNC | 15 | 120 | 16000K | 4.8 | 5000 | 104 | 3.9 | 11.0 | — |
| 74220 | SYLVANIA CYL6435KMVDUDXNC | 15 | 120 | 16500K | 4.8 | 5000 | 104 | 3.9 | 11.0 | — |
| 74221 | SYLVANIA CYL6435KMVDUDXNC | 15 | 120 | 17000K | 4.8 | 5000 | 104 | 3.9 | 11.0 | — |
| 74222 | SYLVANIA CYL6435KMVDUDXNC | 15 | 120 | 17500K | 4.8 | 5000 | 104 | 3.9 | 11.0 | — |
| 74223 | SYLVANIA CYL6435KMVDUDXNC | 15 | 120 | 18000K | 4.8 | 5000 | 104 | 3.9 | 11.0 | — |
| 74224 | SYLVANIA CYL6435KMVDUDXNC | 15 | 120 | 18500K | 4.8 | 5000 | 104 | 3.9 | 11.0 | — |
| 74225 | SYLVANIA CYL6435KMVDUDXNC | 15 | 120 | 19000K | 4.8 | 5000 | 104 | 3.9 | 11.0 | — |
| 74226 | SYLVANIA CYL6435KMVDUDXNC | 15 | 120 | 19500K | 4.8 | 5000 | 104 | 3.9 | 11.0 | — |
| 74227 | SYLVANIA CYL6435KMVDUDXNC | 15 | 120 | 20000K | 4.8 | 5000 | 104 | 3.9 | 11.0 | — |
| 74228 | SYLVANIA CYL6435KMVDUDXNC | 15 | 120 | 20500K | 4.8 | 5000 | 104 | 3.9 | 11.0 | — |
| 74229 | SYLVANIA CYL6435KMVDUDXNC | 15 | 120 | 21000K | 4.8 | 5000 | 104 | 3.9 | 11.0 | — |
| 74230 | SYLVANIA CYL6435KMVDUDXNC | 15 | 120 | 21500K | 4.8 | 5000 | 104 | 3.9 | 11.0 | — |
| 74231 | SYLVANIA CYL6435KMVDUDXNC | 15 | 120 | 22000K | 4.8 | 5000 | 104 | 3.9 | 11.0 | — |
| 74232 | SYLVANIA CYL6435KMVDUDXNC | 15 | 120 | 22500K | 4.8 | 5000 | 104 | 3.9 | 11.0 | — |
| 74233 | SYLVANIA CYL6435KMVDUDXNC | 15 | 120 | 23000K | 4.8 | 5000 | 104 | 3.9 | 11.0 | — |
| 74234 | SYLVANIA CYL6435KMVDUDXNC | 15 | 120 | 23500K | 4.8 | 5000 | 104 | 3.9 | 11.0 | — |
| 74235 | SYLVANIA CYL6435KMVDUDXNC | 15 | 120 | 24000K | 4.8 | 5000 | 104 | 3.9 | 11.0 | — |
| 74236 | SYLVANIA CYL6435KMVDUDXNC | 15 | 120 | 24500K | 4.8 | 5000 | 104 | 3.9 | 11.0 | — |
| 74237 | SYLVANIA CYL6435KMVDUDXNC | 15 | 120 | 25000K | 4.8 | 5000 | 104 | 3.9 | 11.0 | — |
| 74238 | SYLVANIA CYL6435KMVDUDXNC | 15 | 120 | 25500K | 4.8 | 5000 | 104 | 3.9 | 11.0 | — |
| 74239 | SYLVANIA CYL6435KMVDUDXNC | 15 | 120 | 26000K | 4.8 | 5000 | 104 | 3.9 | 11.0 | — |
| 74240 | SYLVANIA CYL6435KMVDUDXNC | 15 | 120 | 26500K | 4.8 | 5000 | 104 | 3.9 | 11.0 | — |
| 74241 | SYLVANIA CYL6435KMVDUDXNC | 15 | 120 | 27000K | 4.8 | 5000 | 104 | 3.9 | 11.0 | — |
| 74242 | SYLVANIA CYL6435KMVDUDXNC | 15 | 120 | 27500K | 4.8 | 5000 | 104 | 3.9 | 11.0 | — |
| 74243 | SYLVANIA CYL6435KMVDUDXNC | 15 | 120 | 28000K | 4.8 | 5000 | 104 | 3.9 | 11.0 | — |
| 74244 | SYLVANIA CYL6435KMVDUDXNC | 15 | 120 | 28500K | 4.8 | 5000 | 104 | 3.9 | 11.0 | — |
| 74245 | SYLVANIA CYL6435KMVDUDXNC | 15 | 120 | 29000K | 4.8 | 5000 | 104 | 3.9 | 11.0 | — |
| 74246 | SYLVANIA CYL6435KMVDUDXNC | 15 | 120 | 29500K | 4.8 | 5000 | 104 | 3.9 | 11.0 | — |
| 74247 | SYLVANIA CYL6435KMVDUDXNC | 15 | 120 | 30000K | 4.8 | 5000 | 104 | 3.9 | 11.0 | — |
| 74248 | SYLVANIA CYL6435KMVDUDXNC | 15 | 120 | 30500K | 4.8 | 5000 | 104 | 3.9 | 11.0 | — |
| 74249 | SYLVANIA CYL6435KMVDUDXNC | 15 | 120 | 31000K | 4.8 | 5000 | 104 | 3.9 | 11.0 | — |
| 74250 | SYLVANIA CYL6435KMVDUDXNC | 15 | 120 | 31500K | 4.8 | 5000 | 104 | 3.9 | 11.0 | — |
| 74251 | SYLVANIA CYL6435KMVDUDXNC | 15 | 120 | 32000K | 4.8 | 5000 | 104 | 3.9 | 11.0 | — |
| 74252 | SYLVANIA CYL6435KMVDUDXNC | 15 | 120 | 32500K | 4.8 | 5000 | 104 | 3.9 | 11.0 | — |
| 74253 | SYLVANIA CYL6435KMVDUDXNC | 15 | 120 | 33000K | 4.8 | 5000 | 104 | 3.9 | 11.0 | — |
| 74254 | SYLVANIA CYL6435KMVDUDXNC | 15 | 120 | 33500K | 4.8 | 5000 | 104 | 3.9 | 11.0 | — |
| 74255 | SYLVANIA CYL6435KMVDUDXNC | 15 | 120 | 34000K | 4.8 | 5000 | 104 | 3.9 | 11.0 | — |
| 74256 | SYLVANIA CYL6435KMVDUDXNC | 15 | 120 | 34500K | 4.8 | 5000 | 104 | 3.9 | 11.0 | — |
| 74257 | SYLVANIA CYL6435KMVDUDXNC | 15 | 120 | 35000K | 4.8 | 5000 | 104 | 3.9 | 11.0 | — |
| 74258 | SYLVANIA CYL6435KMVDUDXNC | 15 | 120 | 35500K | 4.8 | 5000 | 104 | 3.9 | 11.0 | — |
| 74259 | SYLVANIA CYL6435KMVDUDXNC | 15 | 120 | 36000K | 4.8 | 5000 | 104 | 3.9 | 11.0 | — |
| 74260 | SYLVANIA CYL6435KMVDUDXNC | 15 | 120 | 36500K | 4.8 | 5000 | 104 | 3.9 | 11.0 | — |
| 74261 | SYLVANIA CYL6435KMVDUDXNC | 15 | 120 | 37000K | 4.8 | 5000 | 104 | 3.9 | 11.0 | — |
| 74262 | SYLVANIA CYL6435KMVDUDXNC | 15 | 120 | 37500K | 4.8 | 5000 | 104 | 3.9 | 11.0 | — |
| 74263 | SYLVANIA CYL6435KMVDUDXNC | 15 | 120 | 38000K | 4.8 | 5000 | 104 | 3.9 | 11.0 | — |
| 74264 | SYLVANIA CYL6435KMVDUDXNC | 15 | 120 | 38500K | 4.8 | 5000 | 104 | 3.9 | 11.0 | — |
| 74265 | SYLVANIA CYL6435KMVDUDXNC | 15 | 120 | 39000K | 4.8 | 5000 | 104 | 3.9 | 11.0 | — |
| 74266 | SYLVANIA CYL6435KMVDUDXNC | 15 | 120 | 39500K | 4.8 | 5000 | 104 | 3.9 | 11.0 | — |
| 74267 | SYLVANIA CYL6435KMVDUDXNC | 15 | 120 | 40000K | 4.8 | 5000 | 104 | 3.9 | 11.0 | — |
| 74268 | SYLVANIA CYL6435KMVDUDXNC | 15 | 120 | 40500K | 4.8 | 5000 | 104 | 3.9 | 11.0 | — |
| 74269 | SYLVANIA CYL6435KMVDUDXNC | 15 | 120 | 41000K | 4.8 | 5000 | 104 | 3.9 | 11.0 | — |
| 74270 | SYLVANIA CYL6435KMVDUDXNC | 15 | 120 | 41500K | 4.8 | 5000 | 104 | 3.9 | 11.0 | — |
| 74271 | SYLVANIA CYL6435KMVDUDXNC | 15 | 120 | 42000K | 4.8 | 5000 | 104 | 3.9 | 11.0 | — |
| 74272 | SYLVANIA CYL6435KMVDUDXNC | 15 | 120 | 42500K | 4.8 | 5000 | 104 | 3.9 | 11.0 | — |
| 74273 | SYLVANIA CYL6435KMVDUDXNC | 15 | 120 | 43000K | 4.8 | 5000 | 104 | 3.9 | 11.0 | — |
| 74274 | SYLVANIA CYL6435KMVDUDXNC | 15 | 120 | 43500K | 4.8 | 5000 | 104 | 3.9 | 11.0 | — |
| 74275 | SYLVANIA CYL6435KMVDUDXNC | 15 | 120 | 44000K | 4.8 | 5000 | 104 | 3.9 | 11.0 | — |
| 74276 | SYLVANIA CYL6435KMVDUDXNC | 15 | 120 | 44500K | 4.8 | 5000 | 104 | 3.9 | 11.0 | — |
| 74277 | SYLVANIA CYL6435KMVDUDXNC | 15 | 120 | 45000K | 4.8 | 5000 | 104 | 3.9 | 11.0 | — |
| 74278 | SYLVANIA CYL6435KMVDUDXNC | 15 | 120 | 45500K | 4.8 | 5000 | 104 | 3.9 | 11.0 | — |
| 74279 | SYLVANIA CYL6435KMVDUDXNC | 15 | 120 | 46000K | 4.8 | 5000 | 104 | 3.9 | 11.0 | — |
| 74280 | SYLVANIA CYL6435KMVDUDXNC | 15 | 120 | 46500K | 4.8 | 5000 | 104 | 3.9 | 11.0 | — |
| 74281 | SYLVANIA CYL6435KMVDUDXNC | 15 | 120 | 47000K | 4.8 | 5000 | 104 | 3.9 | 11.0 | — |
| 74282 | SYLVANIA CYL6435KMVDUDXNC | 15 | 120 | 47500K | 4.8 | 5000 | 104 | 3.9 | 11.0 | — |
| 74283 | SYLVANIA CYL6435KMVDUDXNC | 15 | 120 | 48000K | 4.8 | 5000 | 104 | 3.9 | 11.0 | — |
| 74284 | SYLVANIA CYL6435KMVDUDXNC | 15 | 120 | 48500K | 4.8 | 5000 | 104 | 3.9 | 11.0 | — |
| 74285 | SYLVANIA CYL6435KMVDUDXNC | 15 | 120 | 49000K | 4.8 | 5000 | 104 | 3.9 | 11.0 | — |
| 74286 | SYLVANIA CYL6435KMVD | | | | | | | | | |

VSX LED Project Name: 1961 Val Vista Habit Catalog Number: VSX-1-18-02-46-19-AM-02 Rev 01 Type: JB-2R

Dimensional Drawings

The VSX LED Series offers clean, functional styling that is defined by its sleek low profile design and rugged construction. It combines LED performance and advanced LED thermal management technology and provides outdoor lighting that is both energy efficient and aesthetically pleasing.

The LED's performance and the driver's life are maximized by enclosing them in two separate cast aluminum housings. Easy captive screw access for mounting and maintenance.

The LED light assemblies come with 16 to 48 LEDs. Seven optical distribution patterns are available. Choose between 3000, 4000 or 5000 Kelvin temperature of the LEDs.

A durable polyester powder coat finish is guaranteed for five years, and is available in standard or custom colors.

The VSX LED series is an exceptional choice for commercial parking lots, office complexes, architectural projects, and other general lighting projects.

| Model | Optics | Source | Current | Kelvin | Voltage | Mounting | Finish | Options |
|-------|-----------------|-----------|-----------|------------|---------------|-----------------|-------------|---|
| VSX-1 | Type I (18LC) | 16 (16LC) | 350 (9) | 3000K (BK) | 120-277 (UNV) | Arm Mount (AM) | Bronze (BZ) | Electrical & Receptacle (PC120) (PC220) (PC277) (PC480) |
| | Type II (18LC) | 16 (16LC) | 350 (9) | 4000K (BK) | 480 (9) | Wall Mount (WM) | Black (BK) | Photo Receptacle (PR) |
| | Type III (18LC) | 32 (32LC) | 530 (9) | 4000K (BK) | 480 (9) | Wall Mount (WM) | Black (BK) | Photo Receptacle (PR) |
| | Type IV (18LC) | 48 (48LC) | 700 (7) | 5000K (BK) | 347 (8) | Wall Mount (WM) | White (WH) | Photo Receptacle (PR) |
| | Type V (18LC) | 48 (48LC) | 1000 (10) | 5000K (BK) | 347 (8) | Wall Mount (WM) | White (WH) | Photo Receptacle (PR) |

VISIONAIRE LIGHTING

JB-2R Lumen Charts, 07_03_17

3000K Scaled Lumen Charts

| # of LEDs | Current(mA) | T1 | T2 | T3 | T4 | T4A | T5 | TSW | Wattage |
|-----------|-------------|-------|-------|-------|-------|-------|-------|-------|---------|
| 16 | 350 | 2398 | 2206 | 2224 | 2176 | 2408 | 2344 | 2248 | 18 |
| | 530 | 3216 | 2958 | 2983 | 2919 | 3228 | 3144 | 2974 | 26 |
| | 700 | 4629 | 4259 | 4293 | 4201 | 4646 | 4526 | 4279 | 36 |
| | 1050 | 6010 | 5529 | 5573 | 5465 | 6032 | 5875 | 5556 | 55 |
| 32 | 350 | 4796 | 4403 | 4439 | 4344 | 4804 | 4679 | 4424 | 37 |
| | 530 | 6422 | 5968 | 5996 | 5829 | 6445 | 6278 | 5937 | 57 |
| | 700 | 7980 | 7323 | 7382 | 7224 | 7988 | 7781 | 7358 | 70 |
| | 1050 | 12520 | 11518 | 11611 | 11384 | 12565 | 12239 | 11574 | 107 |
| 48 | 350 | 6568 | 6043 | 6091 | 5962 | 6592 | 6421 | 6072 | 55 |
| | 530 | 8812 | 8107 | 8172 | 7998 | 8844 | 8615 | 8146 | 82 |
| | 700 | 13330 | 12265 | 12364 | 12100 | 13379 | 13031 | 12324 | 105 |
| | 1050 | 18254 | 16793 | 16929 | 16568 | 18321 | 17845 | 16878 | 160 |

4000K Scaled Lumen Charts

| # of LEDs | Current(mA) | T1 | T2 | T3 | T4 | T4A | T5 | TSW | Wattage |
|-----------|-------------|-------|-------|-------|-------|-------|-------|-------|---------|
| 16 | 350 | 2540 | 2336 | 2356 | 2305 | 2549 | 2483 | 2348 | 18 |
| | 530 | 3407 | 3135 | 3161 | 3093 | 3420 | 3331 | 3151 | 26 |
| | 700 | 4904 | 4512 | 4548 | 4451 | 4923 | 4794 | 4533 | 36 |
| | 1050 | 6367 | 5857 | 5923 | 5779 | 6391 | 6224 | 5888 | 55 |
| 32 | 350 | 5074 | 4665 | 4703 | 4602 | 5069 | 4957 | 4687 | 37 |
| | 530 | 6904 | 6259 | 6310 | 6176 | 6829 | 6651 | 6290 | 57 |
| | 700 | 8433 | 7759 | 7820 | 7654 | 8463 | 8244 | 7798 | 70 |
| | 1050 | 13264 | 12203 | 12301 | 12039 | 13312 | 12966 | 12262 | 107 |
| 48 | 350 | 6959 | 6402 | 6453 | 6316 | 6984 | 6803 | 6433 | 55 |
| | 530 | 9335 | 8589 | 8658 | 8473 | 9370 | 9127 | 8631 | 82 |
| | 700 | 14123 | 12994 | 13099 | 12819 | 14175 | 13806 | 13057 | 105 |
| | 1050 | 19339 | 17792 | 17936 | 17553 | 19410 | 18906 | 17879 | 160 |

5000K Scaled Lumen Charts

| # of LEDs | Current(mA) | T1 | T2 | T3 | T4 | T4A | T5 | TSW | Wattage |
|-----------|-------------|-------|-------|-------|-------|-------|-------|-------|---------|
| 16 | 350 | 2592 | 2384 | 2404 | 2352 | 2601 | 2534 | 2396 | 18 |
| | 530 | 3477 | 3199 | 3225 | 3156 | 3490 | 3389 | 3215 | 26 |
| | 700 | 5004 | 4604 | 4641 | 4542 | 5023 | 4892 | 4628 | 36 |
| | 1050 | 6497 | 5977 | 6025 | 5897 | 6521 | 6351 | 6006 | 55 |
| 32 | 350 | 5744 | 4760 | 4799 | 4696 | 5193 | 5058 | 4783 | 37 |
| | 530 | 6943 | 5967 | 6029 | 5926 | 6488 | 6287 | 6018 | 57 |
| | 700 | 9605 | 7917 | 7980 | 7810 | 8636 | 8412 | 7955 | 70 |
| | 1050 | 13535 | 12452 | 12552 | 12288 | 13584 | 13231 | 12512 | 107 |
| 48 | 350 | 7101 | 6533 | 6585 | 6445 | 7182 | 6942 | 6564 | 55 |
| | 530 | 9526 | 8794 | 8836 | 8646 | 9561 | 9316 | 8807 | 82 |
| | 700 | 14411 | 13259 | 13366 | 13081 | 14464 | 14088 | 13329 | 105 |
| | 1050 | 19734 | 18155 | 18302 | 17911 | 19806 | 19202 | 18244 | 160 |

VISIONAIRE LIGHTING

VSX LED Project Name: 1961 Val Vista Habit Catalog Number: VSX-1-18-02-46-19-AM-02 Rev 01 Type: JB-2R

Dimensional Drawings

The VSX LED Series offers clean, functional styling that is defined by its sleek low profile design and rugged construction. It combines LED performance and advanced LED thermal management technology and provides outdoor lighting that is both energy efficient and aesthetically pleasing.

The LED's performance and the driver's life are maximized by enclosing them in two separate cast aluminum housings. Easy captive screw access for mounting and maintenance.

The LED light assemblies come with 16 to 48 LEDs. Seven optical distribution patterns are available. Choose between 3000, 4000 or 5000 Kelvin temperature of the LEDs.

A durable polyester powder coat finish is guaranteed for five years, and is available in standard or custom colors.

The VSX LED series is an exceptional choice for commercial parking lots, office complexes, architectural projects, and other general lighting projects.

| Model | Optics | Source | Current | Kelvin | Voltage | Mounting | Finish | Options |
|-------|-----------------|-----------|-----------|------------|---------------|-----------------|-------------|---|
| VSX-1 | Type I (18LC) | 16 (16LC) | 350 (9) | 3000K (BK) | 120-277 (UNV) | Arm Mount (AM) | Bronze (BZ) | Electrical & Receptacle (PC120) (PC220) (PC277) (PC480) |
| | Type II (18LC) | 16 (16LC) | 350 (9) | 4000K (BK) | 480 (9) | Wall Mount (WM) | Black (BK) | Photo Receptacle (PR) |
| | Type III (18LC) | 32 (32LC) | 530 (9) | 4000K (BK) | 480 (9) | Wall Mount (WM) | Black (BK) | Photo Receptacle (PR) |
| | Type IV (18LC) | 48 (48LC) | 700 (7) | 5000K (BK) | 347 (8) | Wall Mount (WM) | White (WH) | Photo Receptacle (PR) |
| | Type V (18LC) | 48 (48LC) | 1000 (10) | 5000K (BK) | 347 (8) | Wall Mount (WM) | White (WH) | Photo Receptacle (PR) |

VISIONAIRE LIGHTING

JB-2R Lumen Charts, 07_03_17

3000K Scaled Lumen Charts

| # of LEDs | Current(mA) | T1 | T2 | T3 | T4 | T4A | T5 | TSW | Wattage |
|-----------|-------------|-------|-------|-------|-------|-------|-------|-------|---------|
| 16 | 350 | 2398 | 2206 | 2224 | 2176 | 2408 | 2344 | 2248 | 18 |
| | 530 | 3216 | 2958 | 2983 | 2919 | 3228 | 3144 | 2974 | 26 |
| | 700 | 4629 | 4259 | 4293 | 4201 | 4646 | 4526 | 4279 | 36 |
| | 1050 | 6010 | 5529 | 5573 | 5465 | 6032 | 5875 | 5556 | 55 |
| 32 | 350 | 4796 | 4403 | 4439 | 4344 | 4804 | 4679 | 4424 | 37 |
| | 530 | 6422 | 5968 | 5996 | 5829 | 6445 | 6278 | 5937 | 57 |
| | 700 | 7980 | 7323 | 7382 | 7224 | 7988 | 7781 | 7358 | 70 |
| | 1050 | 12520 | 11518 | 11611 | 11384 | 12565 | 12239 | 11574 | 107 |
| 48 | 350 | 6568 | 6043 | 6091 | 5962 | 6592 | 6421 | 6072 | 55 |
| | 530 | 8812 | 8107 | 8172 | 7998 | 8844 | 8615 | 8146 | 82 |
| | 700 | 13330 | 12265 | 12364 | 12100 | 13379 | 13031 | 12324 | 105 |
| | 1050 | 18254 | 16793 | 16929 | 16568 | 18321 | 17845 | 16878 | 160 |

4000K Scaled Lumen Charts

| # of LEDs | Current(mA) | T1 | T2 | T3 | T4 | T4A | T5 | TSW | Wattage |
|-----------|-------------|-------|-------|-------|-------|-------|-------|-------|---------|
| 16 | 350 | 2540 | 2336 | 2356 | 2305 | 2549 | 2483 | 2348 | 18 |
| | 530 | 3407 | 3135 | 3161 | 3093 | 3420 | 3331 | 3151 | 26 |
| | 700 | 4904 | 4512 | 4548 | 4451 | 4923 | 4794 | 4533 | 36 |
| | 1050 | 6367 | 5857 | 5923 | 5779 | 6391 | 6224 | 5888 | 55 |
| 32 | 350 | 5074 | 4665 | 4703 | 4602 | 5069 | 4957 | 4687 | 37 |
| | 530 | 6904 | 6259 | 6310 | 6176 | 6829 | 6651 | 6290 | 57 |
| | 700 | 8433 | 7759 | 7820 | 7654 | 8463 | 8244 | 7798 | 70 |
| | 1050 | 13264 | 12203 | 12301 | 12039 | 13312 | 12966 | 12262 | 107 |
| 48 | 350 | 6959 | 6402 | 6453 | 6316 | 6984 | 6803 | 6433 | 55 |
| | 530 | 9335 | 8589 | 8658 | 8473 | 9370 | 9127 | 8631 | 82 |
| | 700 | 14123 | 12994 | 13099 | 12819 | 14175 | 13806 | 13057 | 105 |
| | 1050 | 19339 | 17792 | 17936 | 17553 | 19410 | 18906 | 17879 | 160 |

5000K Scaled Lumen Charts

| # of LEDs | Current(mA) | T1 | T2 | T3 | T4 | T4A | T5 | TSW | Wattage |
|-----------|-------------|-------|-------|-------|-------|-------|-------|-------|---------|
| 16 | 350 | 2592 | 2384 | 2404 | 2352 | 2601 | 2534 | 2396 | 18 |
| | 530 | 3477 | 3199 | 3225 | 3156 | 3490 | 3389 | 3215 | 26 |
| | 700 | 5004 | 4604 | 4641 | 4542 | 5023 | 4892 | 4628 | 36 |
| | 1050 | 6497 | 5977 | 6025 | 5897 | 6521 | 6351 | 6006 | 55 |
| 32 | 350 | 5744 | 4760 | 4799 | 4696 | 5193 | 5058 | 4783 | 37 |
| | 530 | 6943 | 5967 | 6029 | 5926 | 6488 | 6287 | 6018 | 57 |
| | 700 | 9605 | 7917 | 7980 | 7810 | 8636 | 8412 | 7955 | 70 |
| | 1050 | 13535 | 12452 | 12552 | 12288 | 13584 | 13231 | 12512 | 107 |
| 48 | 350 | 7101 | 6533 | 6585 | 6445 | 7182 | 6942 | 6564 | 55 |
| | 530 | 9526 | 8794 | 8836 | 8646 | 9561 | 9316 | 8807 | 82 |
| | 700 | 14411 | 13259 | 13366 | 13081 | 14464 | 14088 | 13329 | 105 |
| | 1050 | 19734 | 18155 | 18302 | 17911 | 19806 | 19202 | 18244 | 160 |

VISIONAIRE LIGHTING

1 POLE MOUNT FIXTURE TYPE JB-2R ROTATE LEFT SPECIFICATION SHEETS

SNTS Project Name: 1961 Val Vista Habit Catalog Number: SNTS-AS-1-22-98C-343-D2-BZ Rev 01 Type: JB-2R

Specifications

Square Non Tapered Steel Pole

Pole Shaft

- ASTM A500 Grade B tubing with minimum yield strength of 46,000 PSI. Shaft is furnished with ground top inside pole, opposite hand hole opening. Center line of hand hole is 12" from base plate.

Base Plate

- Steel Plate base is ASTM-A36 hot rolled steel, meets or exceeds minimum yield strength of 36,000 PSI.
- Base templates provided with order. Do not pre-pour.

Base Cover

- Die-formed from heavy gauge quality aluminum. Two piece cover for easy installation.

Pole Cap

- Color-matched polymer snap-to-close cap provided in black.

Finish

- All poles are shot-blasted and cleaned to a near-white finish prior to painting. A Quilt-Quartz textured thermoseal polyester powder coat is then applied to a minimum of 3 millimeters and then oven-baked at a temperature of 400°F to provide exceptional adhesion and finish hardness. Pole finish is warranted for a full two (2) years. An optional five (5) year extended warranty is also available (external prime coat and internal rust-inhibiting coating).

Anchor Bolts

- Poles are provided with hot-dip galvanized anchor bolts, with a "Z" bend on one end and two flat hex bolts end and two flat washers per bolt. Anchor bolts meet or exceed a minimum of 36,000 PSI. Anchor bolts conform to ASTM F1554 grade 36 and are provided.

| Model | Height | Base | Base | Finish | Options |
|-------|--------------|----------|----------|-----------------|----------------|
| SNTS | 4" x 4" (45) | 11 (11) | 10' (10) | 12" Base (12BC) | 1" x 36" (136) |
| | | 7 (7) | 16' (16) | 12" Base (12BC) | 1" x 36" (136) |
| | | 22' (22) | 22' (22) | 12" Base (12BC) | 1" x 36" (136) |
| | | 25' (25) | 25' (25) | 12" Base (12BC) | 1" x 36" (136) |
| | | 30' (30) | 30' (30) | 12" Base (12BC) | 1" x 36" (136) |
| | | 35' (35) | 35' (35) | 12" Base (12BC) | 1" x 36" (136) |

VISIONAIRE LIGHTING

2 POLE MOUNT FIXTURE TYPE JB-2R ROTATE RIGHT SPECIFICATION SHEETS

SNTS

Pole EPA for Square Non Tapered Steel Poles

| Pole Height | Maximum Allowable Wind Velocities (mph) | | | | | Pole O.D. | Pole Gauge | Base Plate | Bolt Circle | Anchor Bolts | |
|-------------|---|---------|---------|---------|---------|-----------|------------|------------|-------------|----------------|------------|
| | 50 mph | 100 mph | 110 mph | 130 mph | 140 mph | | | | | | |
| 10' | 30.1 | 23.5 | 18.4 | 11.0 | 10.3 | 7.6 | 6.1 | 4" | 11" | 9" x 9" x 1/2" | 3/4" x 36" |
| 12' | 33.3 | 17.4 | 13.7 | 8.5 | 7.4 | 5.7 | 4.4 | 4" | 11" | 9" x 9" x 1/2" | 9" x 36" |
| 14' | 18.5 | 13.9 | 10.6 | 6.6 | 5.7 | 4.3 | 3.1 | 4" | 11" | 9" x 9" x 1/2" | 9" x 36" |
| 16' | 18.0 | 10.6 | 10.1 | 4.8 | 3.8 | 3.1 | 1.9 | 4" | 11" | 9" x 9" x 1/2" | 9" x 36" |
| 18' | 11.7 | 8.4 | 6.0 | 3.4 | 2.8 | 1.9 | 1.1 | 4" | 11" | 9" x 9" x 1/2" | 9" x 36" |
| 20' | 9.3 | 6.4 | 4.3 | 2.4 | 1.7 | 1.3 | 0.8 | 4" | 11" | 9" x 9" x 1/2" | 9" x 36" |
| 22' | 18.9 | 10.6 | 9.2 | 5.0 | 4.2 | 3.1 | 2.0 | 4" | 7" | 9" x 9" x 1/2" | 9" x 36" |
| 24' | 17.1 | 12.3 | 9.9 | 6.0 | 4.1 | 3.0 | 1.4 | 5" | | | |